

Recombinant Human ARL5A Protein, Myc/DDK-tagged, C13 and N15-labeled

Cat. No. ARL5A-4878H **Lot. No.** (See product label)

SPECIFICATION

Product Overview	ARL5A MS Standard C13 and N15-labeled recombinant protein (NP_036229) with a C-terminal MYC/DDK tag, was expressed in HEK293 cells.
Species	Human
Source	HEK293
Description	The protein encoded by this gene belongs to the ARF family of GTP-binding proteins. With its distinctive nuclear/nucleolar localization and interaction with HP1alpha, the protein is developmentally regulated and may play a role(s) in nuclear dynamics and/or signaling cascades during embryonic development. Alternative splicing results in multiple transcript variants encoding different isoforms. This gene has multiple pseudogenes.
Molecular Mass	20.7 kDa
AA Sequence	MGILFTRIWRLFNHQEHKVIIVGLDNAGKTTILYQFSMNEVVHTSPTIGSNVEEIVINNT RFLMWDIGGQESLRSSWNTYYTNTTEFVIVVVDSTDRERISVTREELYKMLAHEDLRK AGLLIFANKQDVKECMTVAEISQFLKLTSIKDHQWHIQACCALTGEGLCQGLEWMMS RLKIRTRTRPLEQKLISEEDLAANDILDYKDDDDKV
Purity	> 80% as determined by SDS-PAGE and Coomassie blue staining
Stability	Stable for 3 months from receipt of products under proper storage and handling

 Tel: 1-631-559-9269 1-516-512-3133

 Email: info@creative-biomart.com  Fax: 1-631-938-8127

 45-1 Ramsey Road, Shirley, NY 11967, USA

conditions.

Storage Store at -80 centigrade. Avoid repeated freeze-thaw cycles.

Concentration 50 µg/mL as determined by BCA

Storage Buffer 100 mM glycine, 25 mM Tris-HCl, pH 7.3.

GENE INFORMATION

Gene Name [ARL5A ADP-ribosylation factor-like 5A \[Homo sapiens \(human\) \]](#)

Official Symbol [ARL5A](#)

Synonyms ARL5A; ADP-ribosylation factor-like 5A; ADP ribosylation factor like 5, ARL5; ADP-ribosylation factor-like protein 5A; ADP-ribosylation factor-like 5; ADP-ribosylation factor-like protein 5; ARL5; ARFLP5;

Gene ID [26225](#)

mRNA Refseq [NM_012097](#)

Protein Refseq [NP_036229](#)

MIM [608960](#)

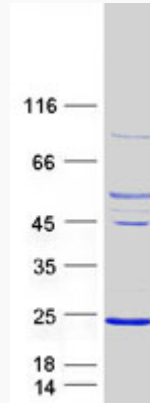
UniProt ID [Q9Y689](#)

 Tel: 1-631-559-9269 1-516-512-3133

 Email: info@creative-biomart.com  Fax: 1-631-938-8127

 45-1 Ramsey Road, Shirley, NY 11967, USA

SDS-PAGE



 Tel: 1-631-559-9269 1-516-512-3133

 Email: info@creative-biomart.com  Fax: 1-631-938-8127

 45-1 Ramsey Road, Shirley, NY 11967, USA