

## Recombinant Human ARL5B protein, GST-tagged

**Cat. No.** ARL5B-815H    **Lot. No.** (See product label)

### SPECIFICATION

<b>Product Overview</b>	Human ARL5B full-length ORF ( NP_848930.1, 1 a.a. - 179 a.a.) recombinant protein with GST-tag at N-terminal.
<b>Species</b>	Human
<b>Source</b>	Wheat Germ
<b>Description</b>	ARL5B (ARL8) belongs to a family of proteins that are structurally similar to ADP-ribosylation factors (ARFs; see MIM 103180). ARLs and ARFs are part of the RAS superfamily of regulatory GTPases.[supplied by OMIM, Nov 2010]
<b>Molecular Mass</b>	46.8 kDa
<b>AA Sequence</b>	MGLIFAKLWSLFCNQECHKVIIVGLDNAGKTTILYQFLMNEVVHTSPTIGSNVEEIVVKN THFLMWDIGGQESLRSSWNTYYSNTEFIILVVDSIDRERLAIKKEELYRMLAHEDLRK AAVLIFANKQDMKGCMTAAEISKYLTLSIKDHPWHIQSCCALTGEGLCQGLEWMTS RIGVR
<b>Applications</b>	Enzyme-linked Immunoabsorbent Assay; Western Blot (Recombinant protein); Antibody Production; Protein Array
<b>Notes</b>	Best use within three months from the date of receipt of this protein.
<b>Storage</b>	Store at -80 centigrade. Aliquot to avoid repeated freezing and thawing.

 Tel: 1-631-559-9269    1-516-512-3133

 Email: [info@creative-biomart.com](mailto:info@creative-biomart.com)     Fax: 1-631-938-8127

 45-1 Ramsey Road, Shirley, NY 11967, USA

**Storage Buffer** 50 mM Tris-HCl, 10 mM reduced Glutathione, pH=8.0 in the elution buffer.

## GENE INFORMATION

**Gene Name** [ARL5B ADP-ribosylation factor-like 5B \[ Homo sapiens \]](#)

**Official Symbol** [ARL5B](#)

**Synonyms** ARL5B; ADP-ribosylation factor-like 5B; ADP ribosylation factor like 8 , ARL8; ADP-ribosylation factor-like protein 5B; ADP-ribosylation factor-like 8; ADP-ribosylation-like factor 8; ADP-ribosylation factor-like protein 8; ARL8;

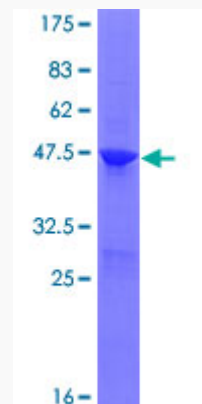
**Gene ID** [221079](#)

**mRNA Refseq** [NM\\_178815](#)

**Protein Refseq** [NP\\_848930](#)

**MIM** [608909](#)

**UniProt ID** [Q96KC2](#)



 Tel: 1-631-559-9269 1-516-512-3133

 Email: [info@creative-biomart.com](mailto:info@creative-biomart.com)  Fax: 1-631-938-8127

 45-1 Ramsey Road, Shirley, NY 11967, USA



12.5% SDS-PAGE Stained with Coomassie Blue.

 Tel: 1-631-559-9269 1-516-512-3133

 Email: [info@creative-biomart.com](mailto:info@creative-biomart.com)  Fax: 1-631-938-8127

 45-1 Ramsey Road, Shirley, NY 11967, USA