

# Recombinant Human ARL6 Protein, Myc/DDK-tagged, C13 and N15-labeled

**Cat. No.** ARL6-5531H    **Lot. No.** (See product label)

## SPECIFICATION

<b>Product Overview</b>	ARL6 MS Standard C13 and N15-labeled recombinant protein (NP_115522) with a C-terminal MYC/DDK tag, was expressed in HEK293 cells.
<b>Species</b>	Human
<b>Source</b>	HEK293
<b>Description</b>	The protein encoded by this gene belongs to the ARF-like (ADP ribosylation factor-like) sub-family of the ARF family of GTP-binding proteins which are involved in regulation of intracellular traffic. Mutations in this gene are associated with Bardet-Biedl syndrome (BBS). A vision-specific transcript, encoding long isoform BBS3L, has been described (PMID: 20333246).
<b>Molecular Mass</b>	21.1 kDa
<b>AA Sequence</b>	MGLLDRLSVLLGLKKKEVHVLCLGLDNSGKTTIINKLKPSNAQSQNILPTIGFSIEKFKS SSLSFTVFDMSGQGRYRNLWEHYKQAIIFVIDSSDRLRMVVAKEELDTLLNHPD IKHRRIPILFFANKMDLRDAVTSVKV/SQLLCLENIKDKPWHICASDAIKGEGLEQGV WLQDQIQTVKTRTRPLEQKLISEEDLAANDILDYKDDDDKV
<b>Purity</b>	> 80% as determined by SDS-PAGE and Coomassie blue staining
<b>Stability</b>	Stable for 3 months from receipt of products under proper storage and handling conditions.

 Tel: 1-631-559-9269    1-516-512-3133

 Email: [info@creative-biomart.com](mailto:info@creative-biomart.com)     Fax: 1-631-938-8127

 45-1 Ramsey Road, Shirley, NY 11967, USA

<b>Storage</b>	Store at -80 centigrade. Avoid repeated freeze-thaw cycles.
----------------	---

<b>Concentration</b>	50 µg/mL as determined by BCA
----------------------	-------------------------------

<b>Storage Buffer</b>	100 mM glycine, 25 mM Tris-HCl, pH 7.3.
-----------------------	---

## GENE INFORMATION

<b>Gene Name</b>	ARL6 ADP-ribosylation factor-like 6 [ Homo sapiens (human) ]
------------------	--

<b>Official Symbol</b>	ARL6
------------------------	------

<b>Synonyms</b>	ARL6; ADP-ribosylation factor-like 6; BBS3; RP55; ADP-ribosylation factor-like protein 6; Bardet-Biedl syndrome 3 protein
-----------------	---

<b>Gene ID</b>	84100
----------------	-------

<b>mRNA Refseq</b>	NM_032146
--------------------	-----------

<b>Protein Refseq</b>	NP_115522
-----------------------	-----------

<b>MIM</b>	608845
------------	--------

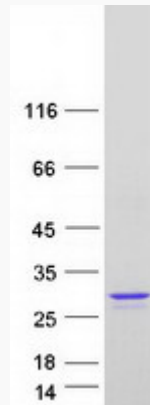
 Tel: 1-631-559-9269 1-516-512-3133

 Email: [info@creative-biomart.com](mailto:info@creative-biomart.com)  Fax: 1-631-938-8127

 45-1 Ramsey Road, Shirley, NY 11967, USA



SDS-PAGE



Tel: 1-631-559-9269 1-516-512-3133

Email: [info@creative-biomart.com](mailto:info@creative-biomart.com) Fax: 1-631-938-8127

45-1 Ramsey Road, Shirley, NY 11967, USA