

Recombinant Human ARL6 Protein, Myc/DDK-tagged, C13 and N15-labeled

Cat. No. ARL6-622H **Lot. No.** (See product label)

SPECIFICATION

Product Overview	ARL6 MS Standard C13 and N15-labeled recombinant protein (NP_816931) with a C-terminal MYC/DDK tag, was expressed in HEK293 cells.
Species	Human
Source	HEK293
Description	The protein encoded by this gene belongs to the ARF-like (ADP ribosylation factor-like) sub-family of the ARF family of GTP-binding proteins which are involved in regulation of intracellular traffic. Mutations in this gene are associated with Bardet-Biedl syndrome (BBS). A vision-specific transcript, encoding long isoform BBS3L, has been described (PMID: 20333246).
Molecular Mass	21.1 kDa
AA Sequence	MGLLDRLSVLLGLKKKEVHVLCLGLDNSGKTTIINKLKPSNAQSQNILPTIGFSIEKFKS SSLSFTVFDMSGQGRYRNLWEHYKQAIIFVIDSSDRLRMVVAKEELDTLLNHPD IKHRRIPILFFANKMDLRDAVTSVKV/SQLLCLENIKDKPWHICASDAIKGEGLEQGV WLQDQIQTVKTRTRPLEQKLISEEDLAANDILDYKDDDDKV
Purity	> 80% as determined by SDS-PAGE and Coomassie blue staining
Stability	Stable for 3 months from receipt of products under proper storage and handling conditions.

 Tel: 1-631-559-9269 1-516-512-3133

 Email: info@creative-biomart.com  Fax: 1-631-938-8127

 45-1 Ramsey Road, Shirley, NY 11967, USA

Storage	Store at -80 centigrade. Avoid repeated freeze-thaw cycles.
----------------	---

Concentration	50 µg/mL as determined by BCA
----------------------	-------------------------------

Storage Buffer	100 mM glycine, 25 mM Tris-HCl, pH 7.3.
-----------------------	---

GENE INFORMATION

Gene Name	ARL6 ADP-ribosylation factor-like 6 [Homo sapiens (human)]
------------------	--

Official Symbol	ARL6
------------------------	------

Synonyms	ARL6; ADP ribosylation factor like GTPase 6; BBS3; RP55; ADP-ribosylation factor-like protein 6; Bardet-Biedl syndrome 3 protein
-----------------	--

Gene ID	84100
----------------	-------

mRNA Refseq	NM_177976
--------------------	-----------

Protein Refseq	NP_816931
-----------------------	-----------

MIM	608845
------------	--------

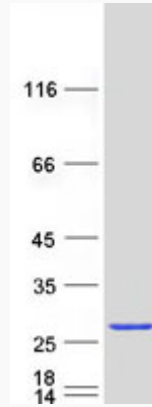
UniProt ID	Q9H0F7
-------------------	--------

 Tel: 1-631-559-9269 1-516-512-3133

 Email: info@creative-biomart.com  Fax: 1-631-938-8127

 45-1 Ramsey Road, Shirley, NY 11967, USA

SDS-PAGE



 Tel: 1-631-559-9269 1-516-512-3133

 Email: info@creative-biomart.com  Fax: 1-631-938-8127

 45-1 Ramsey Road, Shirley, NY 11967, USA