

Recombinant Human ARL6 protein, GST-tagged

Cat. No. ARL6-816H **Lot. No.** (See product label)

SPECIFICATION

Product Overview	Human ARL6 full-length ORF (AAH24239, 1 a.a. - 186 a.a.) recombinant protein with GST-tag at N-terminal.
Species	Human
Source	Wheat Germ
Description	The protein encoded by this gene belongs to the ARF-like (ADP ribosylation factor-like) sub-family of the ARF family of GTP-binding proteins which are involved in regulation of intracellular traffic. Mutations in this gene are associated with Bardet-Biedl syndrome (BBS). A vision-specific transcript, encoding long isoform BBS3L, has been described (PMID: 20333246). [provided by RefSeq, Apr 2016]
Molecular Mass	46.2 kDa
AA Sequence	MGLLDRLSVLLGLKKKEVHVLCLGLDNSGKTTIINKLKPSNAQSQNILPTIGFSIEKFKS SSLSFTVFDMSGQGGRYRNLWEHYKQAIIFVIDSSDRLRMVVAKEELDTLLNHPD IKHRRIPILFFANKMDLRDAVTSVKV/SQLLCLENIKDKPWHICASDAIKGEGLEQEGVD WLQDQIQTVKT
Applications	Enzyme-linked Immunoabsorbent Assay; Western Blot (Recombinant protein); Antibody Production; Protein Array
Notes	Best use within three months from the date of receipt of this protein.

 Tel: 1-631-559-9269 1-516-512-3133

 Email: info@creative-biomart.com  Fax: 1-631-938-8127

 45-1 Ramsey Road, Shirley, NY 11967, USA

Storage Store at -80 centigrade. Aliquot to avoid repeated freezing and thawing.

Storage Buffer 50 mM Tris-HCl, 10 mM reduced Glutathione, pH=8.0 in the elution buffer.

GENE INFORMATION

Gene Name ARL6 ADP ribosylation factor like GTPase 6 [Homo sapiens (human)]

Official Symbol ARL6

Synonyms ARL6; ADP ribosylation factor like GTPase 6; BBS3; RP55; ADP-ribosylation factor-like protein 6; Bardet-Biedl syndrome 3 protein;

Gene ID 84100

mRNA Refseq NM_001278293

Protein Refseq NP_001265222

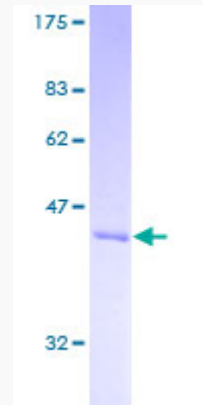
MIM 608845

UniProt ID Q9H0F7

 Tel: 1-631-559-9269 1-516-512-3133

 Email: info@creative-biomart.com  Fax: 1-631-938-8127

 45-1 Ramsey Road, Shirley, NY 11967, USA



12.5% SDS-PAGE Stained with Coomassie Blue.

Tel: 1-631-559-9269 1-516-512-3133

Email: info@creative-biomart.com Fax: 1-631-938-8127

45-1 Ramsey Road, Shirley, NY 11967, USA