

Recombinant Human ARL6IP2 protein, GST-tagged

Cat. No. ARL6IP2-818H **Lot. No.** (See product label)

SPECIFICATION

Product Overview	Human ARL6IP2 full-length ORF (AAH53508, 1 a.a. - 412 a.a.) recombinant protein with GST-tag at N-terminal.
Species	Human
Source	Wheat Germ
Description	ATL2 (Atlastin GTPase 2) is a Protein Coding gene. Diseases associated with ATL2 include Spastic Paraplegia 3A. GO annotations related to this gene include identical protein binding and GTPase activity. An important paralog of this gene is ATL1.
Molecular Mass	71.06 kDa
AA Sequence	<p>MDTQGAFDSQSTIKDCATVFALSTMTSSVQVYNLSQNIQEDDLQHLQLFTEYGRLA MEEIYQKPFQTLMFLIRDWSYPYEHSYGLEGGKQFLEKRLQVKQNQHEELQNVRKH IHNCFSNLGCFLPHPLKLVATNPSFDGRLKDIDEDFKRELRNLVPLLLAPENLVEKEI SGSKVTCRDLVEYFKAYIKIYQGEELPHPKSMLQATAEANNLAAVAGARDTYCKSM QVCGGDKPYIAPSDLERKHLDLKEVAIKQFRSVKMGDEFCCRYYQDQLEAEIEETY ANFIKHNDGKNIFYAARTPATLFAVMFAMYIISGLTGFIGNLSIAVLCNLVMGLALIFLC TWAYVKYSGEFREIGTVIDQIAETLWEQVLKPLGDNLMEENIRQSVTNSIKAGLTDQV SHHARLKTD</p>
Applications	Enzyme-linked Immunoabsorbent Assay; Western Blot (Recombinant protein); Antibody Production; Protein Array

 Tel: 1-631-559-9269 1-516-512-3133

 Email: info@creative-biomart.com  Fax: 1-631-938-8127

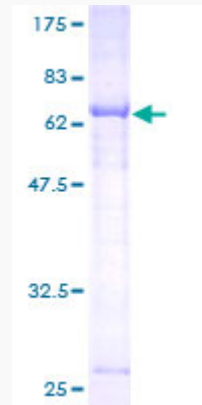
 45-1 Ramsey Road, Shirley, NY 11967, USA

Notes	Best use within three months from the date of receipt of this protein.
Storage	Store at -80 centigrade. Aliquot to avoid repeated freezing and thawing.
Storage Buffer	50 mM Tris-HCl, 10 mM reduced Glutathione, pH=8.0 in the elution buffer.
GENE INFORMATION	
Gene Name	ATL2 atlastin GTPase 2 [Homo sapiens (human)]
Official Symbol	ATL2
Synonyms	ATL2; atlastin GTPase 2; aip-2; ARL3IP2; ARL6IP2; atlastin2; atlastin-2; ADP-ribosylation factor-like protein 6-interacting protein 2; ARL-6-interacting protein 2; EC 3.6.5.-
Gene ID	64225
mRNA Refseq	NM_001135673
Protein Refseq	NP_001129145
MIM	609368
UniProt ID	Q8NHH9

 Tel: 1-631-559-9269 1-516-512-3133

 Email: info@creative-biomart.com  Fax: 1-631-938-8127

 45-1 Ramsey Road, Shirley, NY 11967, USA



12.5% SDS-PAGE Stained with Coomassie Blue.

 Tel: 1-631-559-9269 1-516-512-3133

 Email: info@creative-biomart.com  Fax: 1-631-938-8127

 45-1 Ramsey Road, Shirley, NY 11967, USA