

Recombinant Human ARL6IP5 protein, GST-tagged

Cat. No. ARL6IP5-820H **Lot. No.** (See product label)

SPECIFICATION

Product Overview	Human ARL6IP5 partial ORF (NP_006398, 1 a.a. - 64 a.a.) recombinant protein with GST-tag at N-terminal.
Species	Human
Source	Wheat Germ
Description	Expression of this gene is affected by vitamin A. The encoded protein of this gene may be associated with the cytoskeleton. A similar protein in rats may play a role in the regulation of cell differentiation. The rat protein binds and inhibits the cell membrane glutamate transporter EAAC1. The expression of the rat gene is upregulated by retinoic acid, which results in a specific reduction in EAAC1-mediated glutamate transport. [provided by RefSeq, Jul 2008]
Molecular Mass	32.78 kDa
AA Sequence	MDVNIAPLRAWDDFFPGSDRFARPDFRDISKWNNRVVSNLLYYQTNYLVVAAMMISI VGFLSPF
Applications	Enzyme-linked Immunoabsorbent Assay; Western Blot (Recombinant protein); Antibody Production; Protein Array
Notes	Best use within three months from the date of receipt of this protein.
Storage	Store at -80 centigrade. Aliquot to avoid repeated freezing and thawing.

 Tel: 1-631-559-9269 1-516-512-3133

 Email: info@creative-biomart.com  Fax: 1-631-938-8127

 45-1 Ramsey Road, Shirley, NY 11967, USA

Storage Buffer 50 mM Tris-HCl, 10 mM reduced Glutathione, pH=8.0 in the elution buffer.

GENE INFORMATION

Gene Name [ARL6IP5 ADP-ribosylation-like factor 6 interacting protein 5 \[Homo sapiens \]](#)

Official Symbol [ARL6IP5](#)

Synonyms

ARL6IP5; ADP-ribosylation-like factor 6 interacting protein 5; PRA1 family protein 3; DERP11; GTRAP3 18; HSPC127; JWA; PRA1 domain family 3; PRAF3; JM5; aip-5; protein JWA; ARL-6-interacting protein 5; dermal papilla derived protein 11; dermal papilla-derived protein 11; prenylated Rab acceptor protein 2; putative MAPK activating protein PM27; putative MAPK-activating protein PM27; glutamate transporter EEAC1-associated protein; glutamate transporter EAAC1-interacting protein; cytoskeleton related vitamin A responsive protein; cytoskeleton-related vitamin A-responsive protein; ADP-ribosylation factor-like protein 6-interacting protein 5; jmx; hp22; addicsin; GTRAP3-18;

Gene ID [10550](#)

mRNA Refseq [NM_006407](#)

Protein Refseq [NP_006398](#)

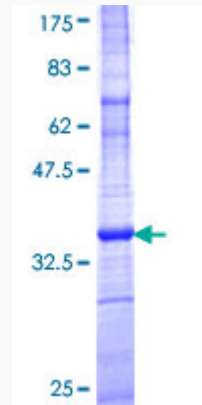
MIM [605709](#)

UniProt ID [O75915](#)

 Tel: 1-631-559-9269 1-516-512-3133

 Email: info@creative-biomart.com  Fax: 1-631-938-8127

 45-1 Ramsey Road, Shirley, NY 11967, USA



12.5% SDS-PAGE Stained with Coomassie Blue.

 Tel: 1-631-559-9269 1-516-512-3133

 Email: info@creative-biomart.com  Fax: 1-631-938-8127

 45-1 Ramsey Road, Shirley, NY 11967, USA