

Recombinant Human ARL6IP6 protein, GST-tagged

Cat. No. ARL6IP6-821H Lot. No. (See product label)

SPECIFICATION

Product Overview	Human ARL6IP6 full-length ORF (NP_689735.1, 1 a.a. - 226 a.a.) recombinant protein with GST-tag at N-terminal.
Species	Human
Source	Wheat Germ
Description	ARL6IP6 (ADP Ribosylation Factor Like GTPase 6 Interacting Protein 6) is a Protein Coding gene. Diseases associated with ARL6IP6 include Cutis Marmorata Telangiectatica Congenita.
Molecular Mass	51.1 kDa
AA Sequence	MSFAESGWRSALRRRGPSTPGPVARPSYSSFTQGDSWGEVDEEEGCDQVAR DLRAEFSAGAWSEPRKRSVLPDNGSPVLPDKRNGIFPAAAGSRAQPRRWPVQV LSILCSLLFAILLAFLLAIAYLIVKELHAENLKNEDDVTGLLGFWTLLIISLTAGFSCCSF SWTVTYFDSFEPGMFPPTPLSPARFKKLTGHSFHMGYSMAILNGIVAALTVAWCLM
Applications	Enzyme-linked Immunoabsorbent Assay; Western Blot (Recombinant protein); Antibody Production; Protein Array
Notes	Best use within three months from the date of receipt of this protein.
Storage	Store at -80 centigrade. Aliquot to avoid repeated freezing and thawing.

 Tel: 1-631-559-9269 1-516-512-3133

 Email: info@creative-biomart.com  Fax: 1-631-938-8127

 45-1 Ramsey Road, Shirley, NY 11967, USA

Storage Buffer 50 mM Tris-HCl, 10 mM reduced Glutathione, pH=8.0 in the elution buffer.

GENE INFORMATION

Gene Name [ARL6IP6 ADP-ribosylation-like factor 6 interacting protein 6 \[Homo sapiens \]](#)

Official Symbol [ARL6IP6](#)

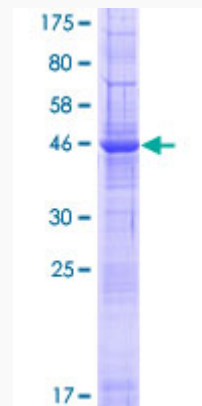
Synonyms ADP ribosylation like factor 6 interacting protein 6; ADP-ribosylation factor-like protein 6-interacting protein 6; Aip-6; AR6P6_HUMAN; ARL-6-interacting protein 6; ARL6IP6; PFAAP1; Phosphonoformate immuno-associated protein 1; Regulated by phosphonoformate; ARL6IP6

Gene ID [151188](#)

mRNA Refseq [NM_152522.5](#)

Protein Refseq [NP_689735.1](#)

UniProt ID [B3KMZ5](#)



 Tel: 1-631-559-9269 1-516-512-3133

 Email: info@creative-biomart.com  Fax: 1-631-938-8127

 45-1 Ramsey Road, Shirley, NY 11967, USA



12.5% SDS-PAGE Stained with Coomassie Blue.

 Tel: 1-631-559-9269 1-516-512-3133

 Email: info@creative-biomart.com  Fax: 1-631-938-8127

 45-1 Ramsey Road, Shirley, NY 11967, USA