

## Recombinant Human ARL8 protein, GST-tagged

Cat. No. ARL8-822H Lot. No. (See product label)

### SPECIFICATION

<b>Product Overview</b>	Human ARL8 partial ORF ( NP_848930, 81 a.a. - 179 a.a.) recombinant protein with GST-tag at N-terminal.
<b>Species</b>	Human
<b>Source</b>	Wheat Germ
<b>Description</b>	ARL5B (ARL8) belongs to a family of proteins that are structurally similar to ADP-ribosylation factors (ARFs; see MIM 103180). ARLs and ARFs are part of the RAS superfamily of regulatory GTPases.[supplied by OMIM, Nov 2010]
<b>Molecular Mass</b>	36.63 kDa
<b>AA Sequence</b>	YSNTEFIILVVDSIDRERLAIKKEELYRMLAHEDLRKAAVLIFANKQDMKGCMTAAEIS KYLTLSSIKDHPWHIQSCCALTGEGLCQGLEWMTSRIGVR
<b>Applications</b>	Enzyme-linked Immunoabsorbent Assay; Western Blot (Recombinant protein); Antibody Production; Protein Array
<b>Notes</b>	Best use within three months from the date of receipt of this protein.
<b>Storage</b>	Store at -80 centigrade. Aliquot to avoid repeated freezing and thawing.
<b>Storage Buffer</b>	50 mM Tris-HCl, 10 mM reduced Glutathione, pH=8.0 in the elution buffer.

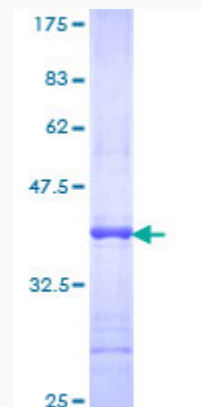
 Tel: 1-631-559-9269 1-516-512-3133

 Email: [info@creative-biomart.com](mailto:info@creative-biomart.com)  Fax: 1-631-938-8127

 45-1 Ramsey Road, Shirley, NY 11967, USA

## GENE INFORMATION

<b>Gene Name</b>	ARL5B ADP-ribosylation factor-like 5B [ Homo sapiens ]
<b>Official Symbol</b>	ARL5B
<b>Synonyms</b>	ARL5B; ADP-ribosylation factor-like 5B; ADP ribosylation factor like 8 , ARL8; ADP-ribosylation factor-like protein 5B; ADP-ribosylation factor-like 8; ADP-ribosylation-like factor 8; ADP-ribosylation factor-like protein 8; ARL8;
<b>Gene ID</b>	221079
<b>mRNA Refseq</b>	NM_178815
<b>Protein Refseq</b>	NP_848930
<b>MIM</b>	608909
<b>UniProt ID</b>	Q96KC2



12.5% SDS-PAGE Stained with Coomassie Blue.

 Tel: 1-631-559-9269 1-516-512-3133

 Email: [info@creative-biomart.com](mailto:info@creative-biomart.com)  Fax: 1-631-938-8127

 45-1 Ramsey Road, Shirley, NY 11967, USA