

Recombinant Human ARMC10 protein, GST-tagged

Cat. No. ARMC10-826H Lot. No. (See product label)

SPECIFICATION

Product Overview Human ARMC10 full-length ORF (AAH03586.1, 1 a.a. - 308 a.a.) recombinant protein with GST-tag at N-terminal.

Species Human

Source Wheat Germ

Description This gene encodes a protein that contains an armadillo repeat and transmembrane domain. The encoded protein decreases the transcriptional activity of the tumor suppressor protein p53 through direct interaction with the DNA-binding domain of p53, and may play a role in cell growth and survival. Upregulation of this gene may play a role in hepatocellular carcinoma. Alternatively spliced transcript variants encoding multiple isoforms have been observed for this gene, and a pseudogene of this gene is located on the long arm of chromosome 3. [provided by RefSeq, Sep 2011]

Molecular Mass 60.2 kDa

AA Sequence
 MGGPRGAGWVAAGLLLGGAGACYCIYRLTRGRRRGDRELGIRSSKSAEDLTDGSYD
 DVLNAEQLQKLLYLLESTEDPVIERALITLGNNAAFSVNQAIIRELGGIPIVANKINHSN
 QSIKEKALNALNNSVNVENQIKIKIYISQVCEDVFSGSLNSAVQLAGLTLTNMTVTN
 DHQHMLHSYITDLFQVLLTGNGNTKVQVLKLLLNSENPA MTEGLLRAQVDSSFLSL
 YDSHVAKEILLRVLTLFQNIKNCLKIEGHLAVQPTFTEGSLFFLLHGEECAQKIRALVD
 HHDAEVKEKVVTIIPKI

 Tel: 1-631-559-9269 1-516-512-3133

 Email: info@creative-biomart.com  Fax: 1-631-938-8127

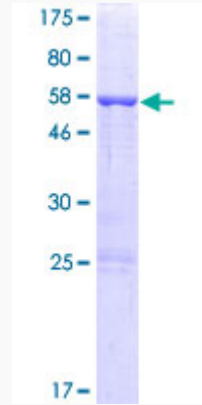
 45-1 Ramsey Road, Shirley, NY 11967, USA

Applications	Enzyme-linked Immunoabsorbent Assay; Western Blot (Recombinant protein); Antibody Production; Protein Array
Notes	Best use within three months from the date of receipt of this protein.
Storage	Store at -80 centigrade. Aliquot to avoid repeated freezing and thawing.
Storage Buffer	50 mM Tris-HCl, 10 mM reduced Glutathione, pH=8.0 in the elution buffer.
GENE INFORMATION	
Gene Name	ARMC10 armadillo repeat containing 10 [Homo sapiens]
Official Symbol	ARMC10
Synonyms	ARMC10; armadillo repeat containing 10; armadillo repeat-containing protein 10; MGC3195; specific Splicing Variant involved in Hepatocarcinogenesis; SVH; splicing variant involved in hepatocarcinogenesis protein; specific splicing variant involved in hepatocarcinogenesis; PNAS112; PNAS-112; PSEC0198; FLJ37850;
Gene ID	83787
mRNA Refseq	NM_001161009
Protein Refseq	NP_001154481
MIM	611864
UniProt ID	Q8N2F6

 Tel: 1-631-559-9269 1-516-512-3133

 Email: info@creative-biomart.com  Fax: 1-631-938-8127

 45-1 Ramsey Road, Shirley, NY 11967, USA



12.5% SDS-PAGE Stained with Coomassie Blue.

 Tel: 1-631-559-9269 1-516-512-3133

 Email: info@creative-biomart.com  Fax: 1-631-938-8127

 45-1 Ramsey Road, Shirley, NY 11967, USA