

Recombinant Human ARMC6 protein, GST-tagged

Cat. No. ARMC6-829H Lot. No. (See product label)

SPECIFICATION

Product Overview	Human ARMC6 full-length ORF (AAH67125, 1 a.a. - 476 a.a.) recombinant protein with GST-tag at N-terminal.
Species	Human
Source	Wheat Germ
Description	The function of this gene's protein product has not been determined. A related protein in mouse suggests that this protein has a conserved function. Two transcript variants encoding different isoforms have been found for this gene. [provided by RefSeq, Nov 2010]
Molecular Mass	78.1 kDa
AA Sequence	MVSKRIAQETFDAAVRENIEEFAMGPPEAVKEAVEQFESQGVDSLNIIVKTAPKVSAD GSQEPHTDILQMLSDLQESVASSRPQEVSAYLTRFCDQCKQDKACRFLAAQKGAYP IIFTAWKLATAGDQGLLLQSLNALSVLTDGQPDLDAQGLQLLVATLTQNADEADLTC SGIRCVRHACLKHEQNRQDLVKAGVLP LLTGAITHHGHHTDVVREACWALRVMTFD DDIRVFPFGHAHNHAKMIVQENKGLKVLIEATKAFLDNP GILSELCGTLSRLAIRNEFCQ EVDLGGLSILVSL LADCNDHQMRDQSGVQELVKQVLSTLRAIAGNDDVKDAIVRAG GTESIVAAMTQH LTSPQVCEQSCAALCFLALRKP DNSRIIVEGGGAVAALQAMKAHP QKAGVQKQACMLIRNLVAHGQAFSKPILD LGAEALIMQARS AHRDCEDVAKAALRDL GCHVELRELWTGQQRGNLAP
Applications	Enzyme-linked Immunoabsorbent Assay; Western Blot (Recombinant protein);

 Tel: 1-631-559-9269 1-516-512-3133

 Email: info@creative-biomart.com  Fax: 1-631-938-8127

 45-1 Ramsey Road, Shirley, NY 11967, USA

Antibody Production; Protein Array

Notes	Best use within three months from the date of receipt of this protein.
Storage	Store at -80 centigrade. Aliquot to avoid repeated freezing and thawing.
Storage Buffer	50 mM Tris-HCl, 10 mM reduced Glutathione, pH=8.0 in the elution buffer.

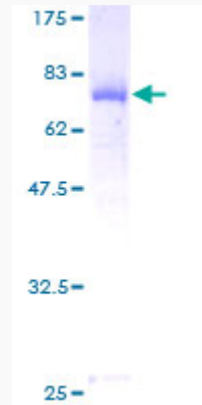
GENE INFORMATION

Gene Name	ARMC6 armadillo repeat containing 6 [Homo sapiens]
Official Symbol	ARMC6
Synonyms	ARMC6; armadillo repeat containing 6; armadillo repeat-containing protein 6; MGC19595; R30923_1;
Gene ID	93436
mRNA Refseq	NM_001199196
Protein Refseq	NP_001186125
UniProt ID	Q6NXE6

 Tel: 1-631-559-9269 1-516-512-3133

 Email: info@creative-biomart.com  Fax: 1-631-938-8127

 45-1 Ramsey Road, Shirley, NY 11967, USA



12.5% SDS-PAGE Stained with Coomassie Blue.

 Tel: 1-631-559-9269 1-516-512-3133

 Email: info@creative-biomart.com  Fax: 1-631-938-8127

 45-1 Ramsey Road, Shirley, NY 11967, USA