

Recombinant Human ARMC8 protein, GST-tagged

Cat. No. ARMC8-831H Lot. No. (See product label)

SPECIFICATION

Product Overview	Human ARMC8 full-length ORF (NP_054873.2, 1 a.a. - 385 a.a.) recombinant protein with GST-tag at N-terminal.
Species	Human
Source	Wheat Germ
Description	ARMC8 (Armadillo Repeat Containing 8) is a Protein Coding gene. Among its related pathways are Immune System. GO annotations related to this gene include binding.
Molecular Mass	69.4 kDa
AA Sequence	MEVTASSRHYVDRLFDPDPQKVLQGVIDMKNNAVIGNNKQKANLIVLGAVPRLLYLLQ QETSSTELKTECAVVLGSLAMGTENNVKSLLDCHIIPALLQGLLSPDLKFIEACLRCLR TIFTSPVTPEELLYTDATVIPHLMALLSRSRYTQEYICQIFSHCCKGPDHQITILFNHGA VQNI AHLTSLSYKVRMQALKCFVSLAFENPQVSMTLVNVLVDGELLPQIFVKMLQR DKPIEMQLTSAKCLTYMCRAGAIRTDNCIVLKTLPCLVRMCSKERLLEERVEGAETL AYLIEPDVELQRIASITDHLIAMLADYFKYPSSVSAITDIKRLDHDLDKHAHEL RQAAFKL YASLGANDEDIRKKVSLGEGRPPVLTASRQGVST
Applications	Enzyme-linked Immunoabsorbent Assay; Western Blot (Recombinant protein); Antibody Production; Protein Array
Notes	Best use within three months from the date of receipt of this protein.

 Tel: 1-631-559-9269 1-516-512-3133

 Email: info@creative-biomart.com  Fax: 1-631-938-8127

 45-1 Ramsey Road, Shirley, NY 11967, USA

Storage Store at -80 centigrade. Aliquot to avoid repeated freezing and thawing.

Storage Buffer 50 mM Tris-HCl, 10 mM reduced Glutathione, pH=8.0 in the elution buffer.

GENE INFORMATION

Gene Name ARMC8 armadillo repeat containing 8 [Homo sapiens]

Official Symbol ARMC8

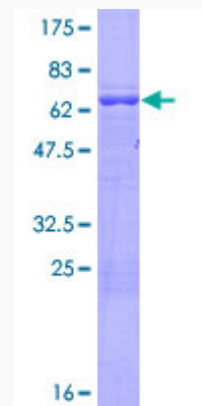
Synonyms ARMC8; armadillo repeat containing 8; armadillo repeat-containing protein 8; DKFZP434A043; HSPC056; S863-2; MGC4880; MGC10058;

Gene ID 25852

mRNA Refseq NM_014154

Protein Refseq NP_054873

UniProt ID Q8IUR7



 Tel: 1-631-559-9269 1-516-512-3133

 Email: info@creative-biomart.com  Fax: 1-631-938-8127

 45-1 Ramsey Road, Shirley, NY 11967, USA



12.5% SDS-PAGE Stained with Coomassie Blue.

 Tel: 1-631-559-9269 1-516-512-3133

 Email: info@creative-biomart.com  Fax: 1-631-938-8127

 45-1 Ramsey Road, Shirley, NY 11967, USA