

Recombinant Human ARM CX1 protein, GST-tagged

Cat. No. ARM CX1-833H Lot. No. (See product label)

SPECIFICATION

Product Overview	Human ARM CX1 full-length ORF (NP_057692.1, 1 a.a. - 453 a.a.) recombinant protein with GST-tag at N-terminal.
Species	Human
Source	Wheat Germ
Description	ARM CX5 (Armadillo Repeat Containing, X-Linked 5) is a Protein Coding gene. GO annotations related to this gene include binding. An important paralog of this gene is GPRASP2.
Molecular Mass	75.6 kDa
AA Sequence	MGRTREAGCVAAGVVIGAGACYCVYRLAWGRDENEKIWDEDEESTDTSEIGVETVK GAKTNAGAGSGAKLQGDSEVKPEVSLGLEDCPGVKEKAHSGSHSGGGLEAKAKAL FNTLKEQASAKAGKGARVGTISGNRTLAPSLPCPGGRGGGCHPTRSGSRAGGRAS GKSKGKARSKSTRAPATTWPVRRGKFNFPYKIDDILSAPDLQKVLNILER TNDPFIQE VALVTLGNNAAYSFNQNAIRELGGVPIIAKLIKTKDPIIREKTYNALNNLSVNAENQGKI KTYISQVCDDTMVCRLDSAVQMAGLRLLTNMTVTNHYQHLLSYSFPDFFALLFLGNH FTKIQIMKLIINF TENPAMTRELVSCKVPSELISL FNKEWDREILLNILTLFENINDNIKNE GLASSRKEFSRSSLFFLFKESGVCVKKIKALANHNDLVVKVVLKVLTKL
Applications	Enzyme-linked Immunoabsorbent Assay; Western Blot (Recombinant protein); Antibody Production; Protein Array

Tel: 1-631-559-9269 1-516-512-3133

Email: info@creative-biomart.com Fax: 1-631-938-8127

45-1 Ramsey Road, Shirley, NY 11967, USA

Notes	Best use within three months from the date of receipt of this protein.
Storage	Store at -80 centigrade. Aliquot to avoid repeated freezing and thawing.
Storage Buffer	50 mM Tris-HCl, 10 mM reduced Glutathione, pH=8.0 in the elution buffer.

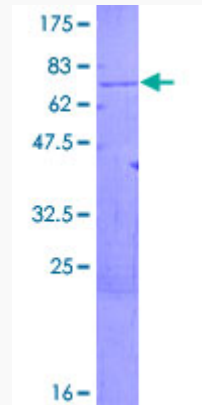
GENE INFORMATION

Gene Name	ARMCX1 armadillo repeat containing, X-linked 1 [Homo sapiens]
Official Symbol	ARMCX1
Synonyms	ARMCX1; armadillo repeat containing, X-linked 1; armadillo repeat-containing X-linked protein 1; ALEX1; arm protein lost in epithelial cancers, X chromosome, 1; ARM protein lost in epithelial cancers on chromosome X 1; DKFZp686P06199;
Gene ID	51309
mRNA Refseq	NM_016608
Protein Refseq	NP_057692
MIM	300362
UniProt ID	Q9P291

 Tel: 1-631-559-9269 1-516-512-3133

 Email: info@creative-biomart.com  Fax: 1-631-938-8127

 45-1 Ramsey Road, Shirley, NY 11967, USA



12.5% SDS-PAGE Stained with Coomassie Blue.

 Tel: 1-631-559-9269 1-516-512-3133

 Email: info@creative-biomart.com  Fax: 1-631-938-8127

 45-1 Ramsey Road, Shirley, NY 11967, USA