

## Recombinant Human ARM CX2 protein, GST-tagged

Cat. No. ARM CX2-834H Lot. No. (See product label)

### SPECIFICATION

<b>Product Overview</b>	Human ARM CX2 partial ORF ( NP_055597, 508 a.a. - 599 a.a.) recombinant protein with GST-tag at N-terminal.
<b>Species</b>	Human
<b>Source</b>	Wheat Germ
<b>Description</b>	This gene encodes a protein containing a potential N-terminal transmembrane domain and multiple armadillo (arm) repeats. Proteins containing arm repeats are involved in development, maintenance of tissue integrity, and tumorigenesis. This gene is located in a cluster of related genes on chromosome X. There is a pseudogene for this gene on chromosome 7. Alternative splicing in the 5' UTR results in multiple transcript variants encoding the same protein. [provided by RefSeq, Aug 2013]
<b>Molecular Mass</b>	35.86 kDa
<b>AA Sequence</b>	NSIANFFRLLSQGGGKIKVEILKILSNFAENPDMLKLLSTQVPASFSSLYNSYVESEIL INALTLFEIYDNLRAEVFNRYREFNKGSLFYL
<b>Applications</b>	Enzyme-linked Immunoabsorbent Assay; Western Blot (Recombinant protein); Antibody Production; Protein Array
<b>Notes</b>	Best use within three months from the date of receipt of this protein.

 Tel: 1-631-559-9269 1-516-512-3133

 Email: [info@creative-biomart.com](mailto:info@creative-biomart.com)  Fax: 1-631-938-8127

 45-1 Ramsey Road, Shirley, NY 11967, USA

**Storage** Store at -80 centigrade. Aliquot to avoid repeated freezing and thawing.

**Storage Buffer** 50 mM Tris-HCl, 10 mM reduced Glutathione, pH=8.0 in the elution buffer.

## GENE INFORMATION

**Gene Name** [ARMCX2 armadillo repeat containing, X-linked 2 \[ Homo sapiens \]](#)

**Official Symbol** [ARMCX2](#)

**Synonyms**

armadillo repeat containing, X-linked 2; arm protein lost in epithelial cancers, X chromosome, 2; ALEX2; armadillo repeat protein ALEX2; KIAA0512; armadillo repeat-containing X-linked protein 2; ARM protein lost in epithelial cancers on chromosome X 2; Protein ALEX2

**Gene ID** [9823](#)

**mRNA Refseq** [NM\\_014782.5](#)

**Protein Refseq** [NP\\_055597.1](#)

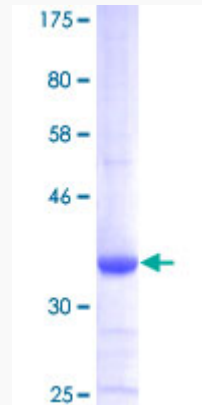
**MIM** [300363](#)

**UniProt ID** [Q7L311](#)

 Tel: 1-631-559-9269 1-516-512-3133

 Email: [info@creative-biomart.com](mailto:info@creative-biomart.com)  Fax: 1-631-938-8127

 45-1 Ramsey Road, Shirley, NY 11967, USA



12.5% SDS-PAGE Stained with Coomassie Blue.

Tel: 1-631-559-9269 1-516-512-3133

Email: [info@creative-biomart.com](mailto:info@creative-biomart.com) Fax: 1-631-938-8127

45-1 Ramsey Road, Shirley, NY 11967, USA