

Recombinant Human ARM CX5 protein, GST-tagged

Cat. No. ARM CX5-836H **Lot. No.** (See product label)

SPECIFICATION

Product Overview	Human ARM CX5 full-length ORF (NP_073749.2, 1 a.a. - 558 a.a.) recombinant protein with GST-tag at N-terminal.
Species	Human
Source	Wheat Germ
Description	ARM CX5 (Armadillo Repeat Containing, X-Linked 5) is a Protein Coding gene. GO annotations related to this gene include binding. An important paralog of this gene is GPRASP2.
Molecular Mass	88.7 kDa
AA Sequence	<p>MVDSGTEARARGKAEAGLQDGISGPATARVNGKTQAEAVAEAEELKTESVTQAKAG DGAMTRTHTVTYREAMAVTREVIVKVEDTTKTRVMVETKTKPLAERSIVPQTKSKAMP MSRVSTVTKSEVKVAVAVIEANIRSYAKSHDKANTGSRPDRREETSIGMKSSDEDEEN ICSWFWTGEEPSVGSWFWPEEETSLQVYKPLPKIQEKPKPTHKPTLTIKQKVIASR ARYIVLVPVEGGESLPPPEGNWTLVETLIETPLGIRPLTKIPPYHGPYYQTLAEIKKQI RQREKYGNPKACHCKSRGFSLEPKFDKLVALLKLTDPFIHEIATMIMGISPAYPF TQDIIHDVGITVM IENLVNNPNVKEHPGALSMVDDSSSESSEEPKSGESYIHQVCKGIIS CPLNSPVQLAGLKLLGHLSIKFEDHYVITSYIPDFL TLLNKGSVKTKFYVLKVFSLSK NHANTRELISAKVLSSLVAPFNKNESKANILNIIEIFENINFQFKTKAKLFTKEKFTKSEL ISIFQEAQFGQKLQDLAEHSDPEVRDKVIRLILKL</p>
Applications	Enzyme-linked Immunoabsorbent Assay; Western Blot (Recombinant protein);

 Tel: 1-631-559-9269 1-516-512-3133

 Email: info@creative-biomart.com  Fax: 1-631-938-8127

 45-1 Ramsey Road, Shirley, NY 11967, USA

Antibody Production; Protein Array

Notes	Best use within three months from the date of receipt of this protein.
Storage	Store at -80 centigrade. Aliquot to avoid repeated freezing and thawing.
Storage Buffer	50 mM Tris-HCl, 10 mM reduced Glutathione, pH=8.0 in the elution buffer.

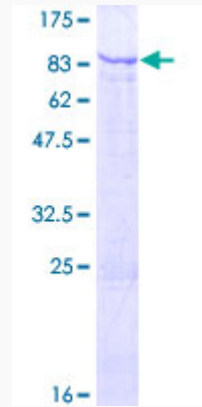
GENE INFORMATION

Gene Name	ARMCX5 armadillo repeat containing, X-linked 5 [Homo sapiens]
Official Symbol	ARMCX5
Synonyms	ARMCX5; armadillo repeat containing, X-linked 5; armadillo repeat-containing X-linked protein 5; FLJ12969; FLJ13382; DKFZp686A22185;
Gene ID	64860
mRNA Refseq	NM_001168478
Protein Refseq	NP_001161950
UniProt ID	Q6P1M9

 Tel: 1-631-559-9269 1-516-512-3133

 Email: info@creative-biomart.com  Fax: 1-631-938-8127

 45-1 Ramsey Road, Shirley, NY 11967, USA



12.5% SDS-PAGE Stained with Coomassie Blue.

Tel: 1-631-559-9269 1-516-512-3133

Email: info@creative-biomart.com Fax: 1-631-938-8127

45-1 Ramsey Road, Shirley, NY 11967, USA