

## Recombinant Human ARMET protein, GST-tagged

**Cat. No.** ARMET-838H    **Lot. No.** (See product label)

### SPECIFICATION

<b>Product Overview</b>	Human ARMET full-length ORF ( AAH07282.1, 1 a.a. - 182 a.a.) recombinant protein with GST-tag at N-terminal.
<b>Species</b>	Human
<b>Source</b>	Wheat Germ
<b>Description</b>	The protein encoded by this gene is localized in the endoplasmic reticulum (ER) and golgi, and is also secreted. Reducing expression of this gene increases susceptibility to ER stress-induced death and results in cell proliferation. Activity of this protein is important in promoting the survival of dopaminergic neurons. The presence of polymorphisms in the N-terminal arginine-rich region, including a specific mutation that changes an ATG start codon to AGG, have been reported in a variety of solid tumors; however, these polymorphisms were later shown to exist in normal tissues and are thus no longer thought to be tumor-related. [provided by RefSeq, Apr 2014]
<b>Molecular Mass</b>	45.65 kDa
<b>AA Sequence</b>	MRRMWATQGLAVALALSVLPGSRALRPGDCEVCISYLGRFYQDLKDRDVTTFSPATI ENELIKFCREARGKENRLCYIGATDDAATKIINEVSKPLAHHIPVEKICEKLLKKKDSQI CELYDKQIDLSTVDLKKLRVKELKKILDDWGETCKGCAEKSDYIRKINELMPKYAPK AASARTDL
<b>Applications</b>	Enzyme-linked Immunoabsorbent Assay; Western Blot (Recombinant protein); Antibody Production; Protein Array

 Tel: 1-631-559-9269    1-516-512-3133

 Email: [info@creative-biomart.com](mailto:info@creative-biomart.com)     Fax: 1-631-938-8127

 45-1 Ramsey Road, Shirley, NY 11967, USA

<b>Notes</b>	Best use within three months from the date of receipt of this protein.
<b>Storage</b>	Store at -80 centigrade. Aliquot to avoid repeated freezing and thawing.
<b>Storage Buffer</b>	50 mM Tris-HCl, 10 mM reduced Glutathione, pH=8.0 in the elution buffer.

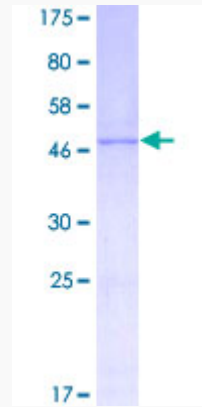
## GENE INFORMATION

<b>Gene Name</b>	MANF mesencephalic astrocyte-derived neurotrophic factor [ Homo sapiens ]
<b>Official Symbol</b>	MANF
<b>Synonyms</b>	MANF; mesencephalic astrocyte-derived neurotrophic factor; arginine rich, mutated in early stage tumors , ARMET; ARP; arginine-rich, mutated in early stage tumors; ARMET; MGC142148; MGC142150;
<b>Gene ID</b>	7873
<b>mRNA Refseq</b>	NM_006010
<b>Protein Refseq</b>	NP_006001
<b>MIM</b>	601916
<b>UniProt ID</b>	P55145

 Tel: 1-631-559-9269 1-516-512-3133

 Email: [info@creative-biomart.com](mailto:info@creative-biomart.com)  Fax: 1-631-938-8127

 45-1 Ramsey Road, Shirley, NY 11967, USA



12.5% SDS-PAGE Stained with Coomassie Blue.

 Tel: 1-631-559-9269 1-516-512-3133

 Email: [info@creative-biomart.com](mailto:info@creative-biomart.com)  Fax: 1-631-938-8127

 45-1 Ramsey Road, Shirley, NY 11967, USA