

## Recombinant Human ARNTL Protein (Glu48-Leu320), N-His-tagged

Cat. No. ARNTL-0527H Lot. No. (See product label)

### SPECIFICATION

<b>Product Overview</b>	Recombinant human ARNTL (Glu48-Leu320) was fused with the N-terminal His tag and was expressed in E. coli.
<b>Species</b>	Human
<b>Source</b>	E.coli
<b>Protein Length</b>	Glu48-Leu320
<b>Form</b>	Lyophilized powder/frozen liquid
<b>Molecular Mass</b>	30.88 kDa
<b>Purity</b>	>90% as determined by SDS-PAGE
<b>Notes</b>	For research use only.
<b>Storage</b>	Use a manual defrost freezer and avoid repeated freeze thaw cycles. Store at 2 to 8 centigrade for one week. Store at -20 to -80 centigrade for twelve months from the date of receipt.
<b>Storage Buffer</b>	Supplied as solution form in PBS pH 7.5 or lyophilized from PBS pH 7.5.
<b>Reconstitution</b>	Reconstitute in sterile water for a stock solution.

 Tel: 1-631-559-9269 1-516-512-3133

 Email: [info@creative-biomart.com](mailto:info@creative-biomart.com)  Fax: 1-631-938-8127

 45-1 Ramsey Road, Shirley, NY 11967, USA

**Shipping** They are shipped out with dry ice/blue ice unless customers require otherwise.

## GENE INFORMATION

**Gene Name** [ARNTL aryl hydrocarbon receptor nuclear translocator-like \[ Homo sapiens \(human\) \]](#)

**Official Symbol** [ARNTL](#)

**Synonyms** ARNTL; aryl hydrocarbon receptor nuclear translocator-like; aryl hydrocarbon receptor nuclear translocator-like protein 1; bHLHe5; BMAL1; JAP3; MOP3; PASD3; bHLH-PAS protein JAP3; member of PAS protein 3; member of PAS superfamily 3; brain and muscle ARNT-like 1; PAS domain-containing protein 3; ARNT-like protein 1, brain and muscle; basic-helix-loop-helix-PAS orphan MOP3; basic-helix-loop-helix-PAS protein MOP3; class E basic helix-loop-helix protein 5; TIC; BMAL1c; MGC47515;

**Gene ID** [406](#)

**mRNA Refseq** [NM\\_001030272](#)

**Protein Refseq** [NP\\_001025443](#)

**MIM** [602550](#)

**UniProt ID** [O00327](#)

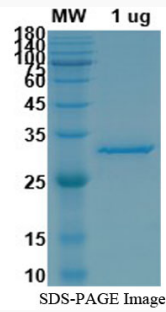
 Tel: 1-631-559-9269 1-516-512-3133

 Email: [info@creative-biomart.com](mailto:info@creative-biomart.com)  Fax: 1-631-938-8127

 45-1 Ramsey Road, Shirley, NY 11967, USA



SDS-PAGE



Tel: 1-631-559-9269 1-516-512-3133

Email: [info@creative-biomart.com](mailto:info@creative-biomart.com) Fax: 1-631-938-8127

45-1 Ramsey Road, Shirley, NY 11967, USA