

Recombinant Human ARPC1A Protein, Myc/DDK-tagged, C13 and N15-labeled

Cat. No. ARPC1A-5138H **Lot. No.** (See product label)

SPECIFICATION

Product Overview	ARPC1A MS Standard C13 and N15-labeled recombinant protein (NP_006400) with a C-terminal MYC/DDK tag, was expressed in HEK293 cells.
Species	Human
Source	HEK293
Description	This gene encodes one of seven subunits of the human Arp2/3 protein complex. This subunit is a member of the SOP2 family of proteins and is most similar to the protein encoded by gene ARPC1B. The similarity between these two proteins suggests that they both may function as p41 subunit of the human Arp2/3 complex that has been implicated in the control of actin polymerization in cells. It is possible that the p41 subunit is involved in assembling and maintaining the structure of the Arp2/3 complex. Multiple versions of the p41 subunit may adapt the functions of the complex to different cell types or developmental stages. Alternatively spliced transcript variants encoding different isoforms have been found for this gene.
Molecular Mass	41.6 kDa
AA Sequence	MSLHQFLLEPITCHAWNDRDRTQIALSPNNHEVHIYKKNGSQWVKAHELKEHNGHITG IDWAPKSDRIVTCGADRNAYVWSQKDGWVKPTLVILRINRAATFVKWSPLENKFAV GSGARLISVCYFESENDWWVSKHIKKPIRSTVLSLDWHPNNVLLAAGSCDFKCRVFS AYIKEVDEKPASTPWGSKMPFGQLMSEFGGSGTGGWVHGVSFASGSRLAWVSH

 Tel: 1-631-559-9269 1-516-512-3133

 Email: info@creative-biomart.com  Fax: 1-631-938-8127

 45-1 Ramsey Road, Shirley, NY 11967, USA

DSTVSVADASKSVQVSTLKTEFLPLLSVSFVSENSVVAAGHDCCPMLFNYDDRGL
 TFVSKLDIPKQSIQRNMSAMERFRNMDKRATTEDRNTALETLHQNSITQVSIYEVDK
 QDCRKFCTTGIDGAMTIWDFKTLESSIQGLRIMTRTRPLEQKLISEEDLAANDILDYKD
 DDDKV

Purity > 80% as determined by SDS-PAGE and Coomassie blue staining

Stability Stable for 3 months from receipt of products under proper storage and handling conditions.

Storage Store at -80 centigrade. Avoid repeated freeze-thaw cycles.

Concentration 50 µg/mL as determined by BCA

Storage Buffer 100 mM glycine, 25 mM Tris-HCl, pH 7.3.

GENE INFORMATION

Gene Name [ARPC1A actin related protein 2/3 complex subunit 1A \[Homo sapiens \(human\) \]](#)

Official Symbol [ARPC1A](#)

Synonyms ARPC1A; actin related protein 2/3 complex, subunit 1A, 41kDa; actin related protein 2/3 complex, subunit 1A (41 kD); actin-related protein 2/3 complex subunit 1A; actin binding protein (Schizosaccharomyces pombe sop2 like); Arc40; SOP2 like protein; SOP2Hs; SOP2L; SOP2-like protein; actin binding protein (Schizosaccharomyces pombe sop2-like);

Gene ID [10552](#)

mRNA Refseq [NM_006409](#)

 Tel: 1-631-559-9269 1-516-512-3133

 Email: info@creative-biomart.com  Fax: 1-631-938-8127

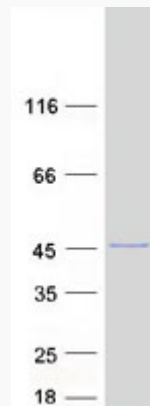
 45-1 Ramsey Road, Shirley, NY 11967, USA

Protein Refseq NP_006400

MIM 604220

UniProt ID Q92747

SDS-PAGE



 Tel: 1-631-559-9269 1-516-512-3133

 Email: info@creative-biomart.com  Fax: 1-631-938-8127

 45-1 Ramsey Road, Shirley, NY 11967, USA