

Recombinant Human ARPC1A protein, GST-tagged

Cat. No. ARPC1A-844H **Lot. No.** (See product label)

SPECIFICATION

Product Overview	Human ARPC1A full-length ORF (AAH39594, 1 a.a. - 370 a.a.) recombinant protein with GST-tag at N-terminal.
Species	Human
Source	Wheat Germ
Description	This gene encodes one of seven subunits of the human Arp2/3 protein complex. This subunit is a member of the SOP2 family of proteins and is most similar to the protein encoded by gene ARPC1B. The similarity between these two proteins suggests that they both may function as p41 subunit of the human Arp2/3 complex that has been implicated in the control of actin polymerization in cells. It is possible that the p41 subunit is involved in assembling and maintaining the structure of the Arp2/3 complex. Multiple versions of the p41 subunit may adapt the functions of the complex to different cell types or developmental stages. Alternatively spliced transcript variants encoding different isoforms have been found for this gene. [provided by RefSeq, Jul 2010]
Molecular Mass	66.44 kDa
AA Sequence	MSLHQFLLEPITCHAWNDRDRTQIALSPNNHEVHIYKKNGSQWVKAHELKEHNGHITG IDWAPKSDRIVTCGADRNAYVWSQKDGWVKPTLVILRINRAATFVKWSPLENKFAV GSGARLISVCYFESENDWWVSKHIKKPIRSTVLSLDWHPNPNVLLAAGSCDFKCRVFS AYIKEVDEKPASTPWGSKMPFGQLMSEFGGSGTGGWVHGVSFSASGSRLAWVSH

 Tel: 1-631-559-9269 1-516-512-3133

 Email: info@creative-biomart.com  Fax: 1-631-938-8127

 45-1 Ramsey Road, Shirley, NY 11967, USA



DSTVSVADASKSVQVSTLKTEFLPLLSVSFVSENSVVAAGHDCCPMLFNYDDRGCL
TFVSKLDIPKQSIQRNMSAMERFRNMDKRATTEDRNTALETLHQNSITQVSIYEVDK
QDCRKFACTVIDGAMTIWDFKTLESSIQGLRIM

Applications

Enzyme-linked Immunoabsorbent Assay; Western Blot (Recombinant protein);
Antibody Production; Protein Array

Notes

Best use within three months from the date of receipt of this protein.

Storage

Store at -80 centigrade. Aliquot to avoid repeated freezing and thawing.

Storage Buffer

50 mM Tris-HCl, 10 mM reduced Glutathione, pH=8.0 in the elution buffer.

GENE INFORMATION

Gene Name

[ARPC1A actin related protein 2/3 complex, subunit 1A, 41kDa \[Homo sapiens \]](#)

Official Symbol

[ARPC1A](#)

Synonyms

ARPC1A; actin related protein 2/3 complex, subunit 1A, 41kDa; actin related protein 2/3 complex, subunit 1A (41 kD); actin-related protein 2/3 complex subunit 1A; actin binding protein (Schizosaccharomyces pombe sop2 like); Arc40; SOP2 like protein; SOP2Hs; SOP2L; SOP2-like protein; actin binding protein (Schizosaccharomyces pombe sop2-like);

Gene ID

[10552](#)

mRNA Refseq

[NM_001190996](#)

Protein Refseq

[NP_001177925](#)

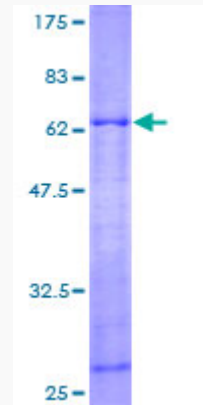
Tel: 1-631-559-9269 1-516-512-3133

Email: info@creative-biomart.com Fax: 1-631-938-8127

45-1 Ramsey Road, Shirley, NY 11967, USA

MIM 604220

UniProt ID Q92747



12.5% SDS-PAGE Stained with Coomassie Blue.

 Tel: 1-631-559-9269 1-516-512-3133

 Email: info@creative-biomart.com  Fax: 1-631-938-8127

 45-1 Ramsey Road, Shirley, NY 11967, USA