

Recombinant Full Length Human ARPC1B Protein, C-Flag-tagged

Cat. No. ARPC1B-2019HFL **Lot. No.** (See product label)

SPECIFICATION

Product Overview	Recombinant Full Length Human ARPC1B Protein, fused to Flag-tag at C-terminus, was expressed in Mammalian cells.
Species	Human
Source	Mammalian Cells
Description	This gene encodes one of seven subunits of the human Arp2/3 protein complex. This subunit is a member of the SOP2 family of proteins and is most similar to the protein encoded by gene ARPC1A. The similarity between these two proteins suggests that they both may function as p41 subunit of the human Arp2/3 complex that has been implicated in the control of actin polymerization in cells. It is possible that the p41 subunit is involved in assembling and maintaining the structure of the Arp2/3 complex. Multiple versions of the p41 subunit may adapt the functions of the complex to different cell types or developmental stages. This protein also has a role in centrosomal homeostasis by being an activator and substrate of the Aurora A kinase.
Form	25 mM Tris HCl, pH 7.3, 100 mM glycine, 10% glycerol.
Molecular Mass	40.8 kDa
AA Sequence	MAYHSFLVEPISCHAWNKDRTQIAICPNNHEVHIYEKSGAKWTKVHELKEHNGQVT GIDWAPESNRIVTC GTDRNAYVWTLKGRTWKPTLVILRINRAARCVRWAPNENKFA VGSGSRVISICYFEQENDWWVCKHIKKP IRSTVLSLDWHPNNVLLAAGSCDFKCRIF

 Tel: 1-631-559-9269 1-516-512-3133

 Email: info@creative-biomart.com  Fax: 1-631-938-8127

 45-1 Ramsey Road, Shirley, NY 11967, USA

SAYIKEVEERPAPTPWGSKMPFGELMFESSSSCGWVHGVCF SASGSRVAWVSHD
 STVCLADADKKMAVATLASETLPLLALTFITDNSLVAAGHDCFPVLFTYDAAAGMLS
 FGGRLDVPKQSSQRGLTARERFQNLDDKASSEGGTAAGAGLDSLHKNSVSQISVLS
 G GKAKCSQFCTTGM DGGMSIWDVKSLESALKDLKIK TRTRPLEQKLISEEDLAANDI
 LDYKDDDDKV

Purity > 80% as determined by SDS-PAGE and Coomassie blue staining.

Stability Stable for 12 months from the date of receipt of the product under proper storage and handling conditions. Avoid repeated freeze-thaw cycles.

Storage Store at -80 centigrade.

Concentration >50 ug/mL as determined by microplate BCA method.

Preparation Recombinant protein was captured through anti-DDK affinity column followed by conventional chromatography steps.

Protein Pathways Fc gamma R-mediated phagocytosis, Pathogenic Escherichia coli infection, Regulation of actin cytoskeleton

Full Length Full L.

GENE INFORMATION

Gene Name [ARPC1B actin related protein 2/3 complex subunit 1B \[Homo sapiens \(human\) \]](#)

Official Symbol [ARPC1B](#)

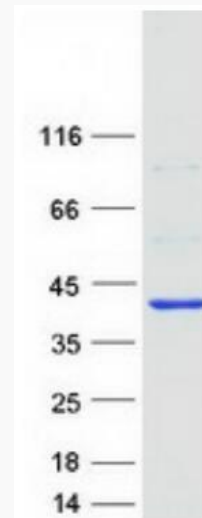
Synonyms ARC41; IMD71; PLTEID; p40-ARC; p41-ARC

 Tel: 1-631-559-9269 1-516-512-3133

 Email: info@creative-biomart.com  Fax: 1-631-938-8127

 45-1 Ramsey Road, Shirley, NY 11967, USA

Gene ID	10095
mRNA Refseq	NM_005720.4
Protein Refseq	NP_005711.1
MIM	604223
UniProt ID	O15143



Coomassie blue staining of purified ARPC1B protein.

Tel: 1-631-559-9269 1-516-512-3133

Email: info@creative-biomart.com Fax: 1-631-938-8127

45-1 Ramsey Road, Shirley, NY 11967, USA