

Recombinant Human ARPC1B protein, GST-tagged

Cat. No. ARPC1B-845H Lot. No. (See product label)

SPECIFICATION

Product Overview	Human ARPC1B full-length ORF (NP_005711.1, 1 a.a. - 372 a.a.) recombinant protein with GST-tag at N-terminal.
Species	Human
Source	Wheat Germ
Description	<p>This gene encodes one of seven subunits of the human Arp2/3 protein complex. This subunit is a member of the SOP2 family of proteins and is most similar to the protein encoded by gene ARPC1A. The similarity between these two proteins suggests that they both may function as p41 subunit of the human Arp2/3 complex that has been implicated in the control of actin polymerization in cells. It is possible that the p41 subunit is involved in assembling and maintaining the structure of the Arp2/3 complex. Multiple versions of the p41 subunit may adapt the functions of the complex to different cell types or developmental stages. This protein also has a role in centrosomal homeostasis by being an activator and substrate of the Aurora A kinase. [provided by RefSeq, Mar 2011]</p>
Molecular Mass	67.3 kDa
AA Sequence	<p>MAYHSFLVEPISCHAWNKDRTQIAICPNNHEVHIYEKSGAKWTKVHELKEHNGQVT GIDWAPESNRIVTCGTDRNAYVWTLKGRTWKPTLVILRINRAARCVRWAPNENKFA VGSGSRVISICYFEQENDWWVCKHIKKPIRSTVLSLDWHPNNVLLAAGSCDFKCRIF SAYIKEVEERPAPTPWGSKMPFGELMFESSSSCGWVHGVCFSASGSRVAWVSHD</p>

 Tel: 1-631-559-9269 1-516-512-3133

 Email: info@creative-biomart.com  Fax: 1-631-938-8127

 45-1 Ramsey Road, Shirley, NY 11967, USA

STVCLADADKKMAVATLASETLPLLALTFITDNSLVAAGHDCFPVLFTYDAAAGMLSF
GGRLDVPKQSSQRGLTARERFQNLDDKKASSEGGTAAGAGLDSLHKNSVSQISVLSG
GKAKCSQFCTTGMDGGMSIWDVKSLESALKDLKIK

Applications

Enzyme-linked Immunoabsorbent Assay; Western Blot (Recombinant protein);
Antibody Production; Protein Array

Notes

Best use within three months from the date of receipt of this protein.

Storage

Store at -80 centigrade. Aliquot to avoid repeated freezing and thawing.

Storage Buffer

50 mM Tris-HCl, 10 mM reduced Glutathione, pH=8.0 in the elution buffer.

GENE INFORMATION

Gene Name

[ARPC1B actin related protein 2/3 complex, subunit 1B, 41kDa \[Homo sapiens \]](#)

Official Symbol

[ARPC1B](#)

Synonyms

ARPC1B; actin related protein 2/3 complex, subunit 1B, 41kDa; actin related protein 2/3 complex, subunit 1B (41 kD); actin-related protein 2/3 complex subunit 1B; actin related protein 2/3 complex; subunit 1A (41 kD); ARC41; ARP2/3 protein complex subunit p41; p40 ARC; p41 ARC; arp2/3 complex 41 kDa subunit; p40-ARC; p41-ARC;

Gene ID

[10095](#)

mRNA Refseq

[NM_005720](#)

Protein Refseq

[NP_005711](#)

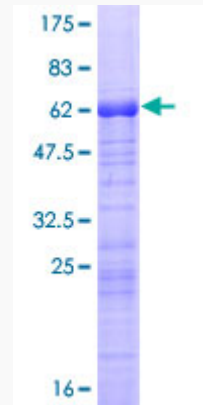
 Tel: 1-631-559-9269 1-516-512-3133

 Email: info@creative-biomart.com  Fax: 1-631-938-8127

 45-1 Ramsey Road, Shirley, NY 11967, USA

MIM 604223

UniProt ID O15143



12.5% SDS-PAGE Stained with Coomassie Blue.

 Tel: 1-631-559-9269 1-516-512-3133

 Email: info@creative-biomart.com  Fax: 1-631-938-8127

 45-1 Ramsey Road, Shirley, NY 11967, USA