

# Recombinant Human ARPC2 Protein, Myc/DDK-tagged, C13 and N15-labeled

**Cat. No.** ARPC2-702H    **Lot. No.** (See product label)

## SPECIFICATION

<b>Product Overview</b>	ARPC2 MS Standard C13 and N15-labeled recombinant protein (NP_005722) with a C-terminal MYC/DDK tag, was expressed in HEK293 cells.
<b>Species</b>	Human
<b>Source</b>	HEK293
<b>Description</b>	This gene encodes one of seven subunits of the human Arp2/3 protein complex. The Arp2/3 protein complex has been implicated in the control of actin polymerization in cells and has been conserved through evolution. The exact role of the protein encoded by this gene, the p34 subunit, has yet to be determined. Two alternatively spliced variants have been characterized to date. Additional alternatively spliced variants have been described but their full length nature has not been determined.
<b>Molecular Mass</b>	34.3 kDa
<b>AA Sequence</b>	MILLEVNNRIIEETLALKFENAAAGNKPEAVEVTFADFDGVLYHISNPNGDKTKVMVSI SLKFYKELQAHGADELLKRVYGSFLVNPESGYNVSLLYDLENLPASKDSIVHQAGML KRNCFASVFEKYFQFQEEGKEGENRAVIHYRDEETMYVESKKDRVTVVFSTVFKDD DDVVIGKVFMQEFKEGRRASHTAPQVLFSHREPPLELKDTDAAVGDNIGYITFVLP RHTNASARDNTINLIHTFRDYLHYHIKCSKAYIHTRMRAKTSDFLKVLNRRARPDAEKK EMKTITGKTFFSSRTRTRPLEQKLISEEDLAANDILDYKDDDDKV
<b>Purity</b>	> 80% as determined by SDS-PAGE and Coomassie blue staining

 Tel: 1-631-559-9269    1-516-512-3133

 Email: [info@creative-biomart.com](mailto:info@creative-biomart.com)     Fax: 1-631-938-8127

 45-1 Ramsey Road, Shirley, NY 11967, USA

<b>Stability</b>	Stable for 3 months from receipt of products under proper storage and handling conditions.
<b>Storage</b>	Store at -80 centigrade. Avoid repeated freeze-thaw cycles.
<b>Concentration</b>	50 µg/mL as determined by BCA
<b>Storage Buffer</b>	100 mM glycine, 25 mM Tris-HCl, pH 7.3.

## GENE INFORMATION

<b>Gene Name</b>	ARPC2 actin related protein 2/3 complex subunit 2 [ Homo sapiens (human) ]
<b>Official Symbol</b>	ARPC2
<b>Synonyms</b>	ARPC2; actin related protein 2/3 complex, subunit 2, 34kDa; actin related protein 2/3 complex, subunit 2 (34 kD); actin-related protein 2/3 complex subunit 2; ARC34; p34 Arc; arp2/3 complex 34 kDa subunit; ARP2/3 protein complex subunit 34; PRO2446; p34-Arc; PNAS-139;
<b>Gene ID</b>	10109
<b>mRNA Refseq</b>	NM_005731
<b>Protein Refseq</b>	NP_005722
<b>MIM</b>	604224
<b>UniProt ID</b>	O15144

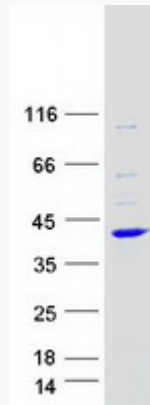
 Tel: 1-631-559-9269 1-516-512-3133

 Email: [info@creative-biomart.com](mailto:info@creative-biomart.com)  Fax: 1-631-938-8127

 45-1 Ramsey Road, Shirley, NY 11967, USA



SDS-PAGE



Tel: 1-631-559-9269 1-516-512-3133

Email: [info@creative-biomart.com](mailto:info@creative-biomart.com) Fax: 1-631-938-8127

45-1 Ramsey Road, Shirley, NY 11967, USA