

Recombinant Human ARPC3 protein, GST-tagged

Cat. No. ARPC3-847H Lot. No. (See product label)

SPECIFICATION

Product Overview	Human ARPC3 full-length ORF (NP_005710.1, 1 a.a. - 178 a.a.) recombinant protein with GST-tag at N-terminal.
Species	Human
Source	Wheat Germ
Description	This gene encodes one of seven subunits of the human Arp2/3 protein complex. The Arp2/3 protein complex has been conserved through evolution and is implicated in the control of actin polymerization in cells. Alternatively spliced transcript variants have been found for this gene. [provided by RefSeq, Dec 2013]
Molecular Mass	46.9 kDa
AA Sequence	MPAYHSSLMDPDTKLIGNMALLPIRSQFKGPAPRETKD TDIVDEAIYYFKANVFFKNY EIKNEADRTLIIYITLYISECLKKLQKCNSKSKSQGEKEMYTLGITNFPPIGEPGFPLNAIYA KPANKQEDEV MRAYLQQLRQETGLRLCEKVFD PQNDKPSKWWTCTFVKRQFMNKS LSGPGQ
Applications	Enzyme-linked Immunoabsorbent Assay; Western Blot (Recombinant protein); Antibody Production; Protein Array
Notes	Best use within three months from the date of receipt of this protein.
Storage	Store at -80 centigrade. Aliquot to avoid repeated freezing and thawing.

 Tel: 1-631-559-9269 1-516-512-3133

 Email: info@creative-biomart.com  Fax: 1-631-938-8127

 45-1 Ramsey Road, Shirley, NY 11967, USA

Storage Buffer 50 mM Tris-HCl, 10 mM reduced Glutathione, pH=8.0 in the elution buffer.

GENE INFORMATION

Gene Name ARPC3 actin related protein 2/3 complex, subunit 3, 21kDa [Homo sapiens]

Official Symbol ARPC3

Synonyms ARPC3; actin related protein 2/3 complex, subunit 3, 21kDa; actin related protein 2/3 complex, subunit 3 (21 kD); actin-related protein 2/3 complex subunit 3; ARC21; p21 Arc; arp2/3 complex 21 kDa subunit; ARP2/3 protein complex subunit p21; p21-Arc;

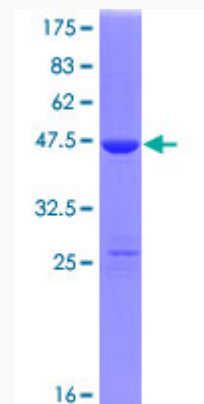
Gene ID 10094

mRNA Refseq NM_005719

Protein Refseq NP_005710

MIM 604225

UniProt ID O15145



 Tel: 1-631-559-9269 1-516-512-3133

 Email: info@creative-biomart.com  Fax: 1-631-938-8127

 45-1 Ramsey Road, Shirley, NY 11967, USA



12.5% SDS-PAGE Stained with Coomassie Blue.

 Tel: 1-631-559-9269 1-516-512-3133

 Email: info@creative-biomart.com  Fax: 1-631-938-8127

 45-1 Ramsey Road, Shirley, NY 11967, USA