

Recombinant Human ARPC5, His-tagged

Cat. No. ARPC5-3539H Lot. No. (See product label)

SPECIFICATION

Product Overview	Recombinant humanARPC5 protein, fused to His-tag at N-terminus, was expressed in E. coliand purified by using conventional chromatography techniques.
Species	Human
Source	Human
Description	ARPC5 is a 151 aminoacid subunit of the Arp2/3 complex. Thought to play a role in maintaining the integrity of Arp2/3, ARPC5 is a substrate for MAPKAPK-2 which, through phosphorylation of ARPC5, may participate in Arp2/3 regulatory functions and remodeling of the Actin cytoskeleton. Two isoforms of ARPC5 exist due to alternative splicing events.
Application	SDS-PAGE
Form	Liquid. In 20mM Tris-HCl buffer (pH 8.0) containing 1mM DTT, 50% glycerol, 0.1M NaCl.
Molecular Weight	18.4 kDa (171aa), confirmed by MALDI-TOF
Purity	> 90% by SDS-PAGE
Concentration	0.5 mg/ml (determined by Bradford assay)
Sequences of	MGSSHHHHHHSSGLVPRGSHMSKNTVSSAR FRKVDVDEYD ENKFDVEEDG

 Tel: 1-631-559-9269 1-516-512-3133

 Email: info@creative-biomart.com  Fax: 1-631-938-8127

 45-1 Ramsey Road, Shirley, NY 11967, USA

aminoacids	GDGQAGPDEG EVDSCLRQGNMTAALQAALK NPPINTKSQA VKDRAGSIVL KVLISFKAND IEKAVQSLDK NGVDLLMKYI YKGFESPSDNSSAMLLQWHE KALAAGGVGS IVRVLTARKT V
Storage	Can bestored at +4°C short term (1-2 weeks). For long term storage, aliquot andstore at -20°C or -70°C. Avoid repeated freezing and thawing cycles.
OfficialSymbol	ARPC5

GENE INFORMATION

Gene Name	ARPC5 actin related protein 2/3complex, subunit 5, 16kDa [Homo sapiens]
Synonyms	ARPC5; actinrelated protein 2/3 complex, subunit 5, 16kDa; ARC16;p16-Arc; MGC88523; dJ127C7.3; actin-related protein 2/3 complex subunit 5;OTTHUMP00000033266; OTTHUMP00000033267; OTTHUMP00000038626; arp2/3 complex 16kDa subunit; Arp2/3 protein complex subunit p16; p16-ARC
Gene ID	10092
mRNA Refseq	NM_005717
Protein Refseq	NP_005708
MIM	604227
UniProt ID	O15511
Chromosome Location	1p25.3

 Tel: 1-631-559-9269 1-516-512-3133

 Email: info@creative-biomart.com  Fax: 1-631-938-8127

 45-1 Ramsey Road, Shirley, NY 11967, USA

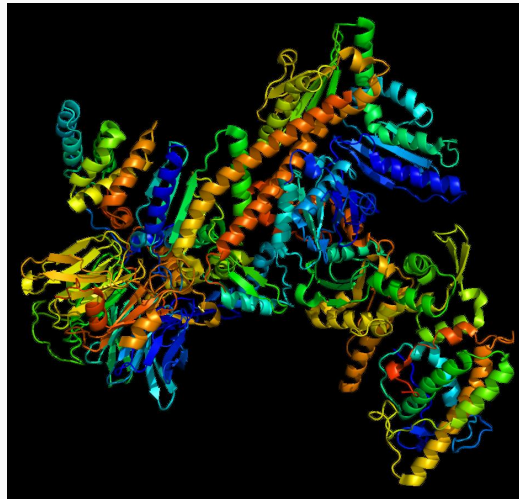
Pathway

B Cell Receptor Signaling Pathway; CDC42 signaling events; ErbB1 downstream signaling; FcγR-mediated phagocytosis; Pathogenic Escherichia coli infection; RAC1 signaling pathway; Regulation of Actin Cytoskeleton; Salmonella infection; Shigellosis; Bacterial invasion of epithelial cells

Function

actin binding; protein binding; structural constituent of cytoskeleton

PDB rendering based
on 1k8k.



 Tel: 1-631-559-9269 1-516-512-3133

 Email: info@creative-biomart.com  Fax: 1-631-938-8127

 45-1 Ramsey Road, Shirley, NY 11967, USA