

Recombinant Human Actin Related Protein 2/3 Complex, Subunit 5, 16kDa, His-tagged

Cat. No. ARPC5-4975H Lot. No. (See product label)

SPECIFICATION

Product Overview	Recombinant human ARPC5 protein, fused to His-tag at N-terminus, was expressed in E. coli and purified by using conventional chromatography techniques.
Species	Human
Source	Human
Description	p16-ARC, also known as ARPC5, is a 151 amino acid subunit of the Arp2/3 complex. Thought to play a role in maintaining the integrity of Arp2/3, ARPC5 is a substrate for MAPKAPK-2 which, through phosphorylation of ARPC5, may participate in Arp2/3 regulatory functions and remodeling of the Actin cytoskeleton. Two isoforms of ARPC5 exist due to alternative splicing events.
Concentration	0.5 mg/ml
Form	Supplied as a liquid in 20mM Tris-HCl buffer, pH 8.0, containing 1mM DTT, 50% glycerol and 0.1M NaCl.
Purity	> 90% by SDS - PAGE
Sequence	1-151 amino acids: MGSSHHHHHH SSGLVPRGSH MSKNTVSSAR FRKVDVDEYD ENKFVDEEDG GDGQAGPDEG EVDSCLRQGN MTAALQAALK NPPINTKSQA VKDRAGSIVL KVLISFKAND IEKAVQSLDK NGVDLLMKYI YKGFESPSDN SSAMLLQWHE KALAAGGVGS IVRVLTARKT V

 Tel: 1-631-559-9269 1-516-512-3133

 Email: info@creative-biomart.com  Fax: 1-631-938-8127

 45-1 Ramsey Road, Shirley, NY 11967, USA

Molecular Mass	18.4 kDa (171aa), confirmed by MALDI-TOF
Applications	SDS-PAGE
Storage	Store at 4 deg C for short term storage (1/2 weeks). Aliquot and store at -20 deg C or -70 deg C for long term storage. Avoid repeated freeze/thaw cycles.
GENE INFORMATION	
Gene Name	ARPC5 actin related protein 2/3 complex, subunit 5, 16kDa [Homo sapiens]
Official Symbol	ARPC5
Synonyms	ARPC5; ARC16; p16-Arc; MGC88523; dJ127C7.3; actin related protein 2/3 complex, subunit 5, 16kDa; actin-related protein 2/3 complex subunit 5; OTTHUMP00000033266; OTTHUMP00000033267; OTTHUMP00000038626; arp2/3 complex 16 kDa subunit; Arp2/3 protein complex subunit p16; p16-ARC
Gene ID	10092
mRNA Refseq	NM_005717
Protein Refseq	NP_005708
MIM	604227
UniProt ID	O15511
Chromosome Location	1q25.3
Pathway	B Cell Receptor Signaling Pathway; CDC42 signaling events; ErbB1 downstream

 Tel: 1-631-559-9269 1-516-512-3133

 Email: info@creative-biomart.com  Fax: 1-631-938-8127

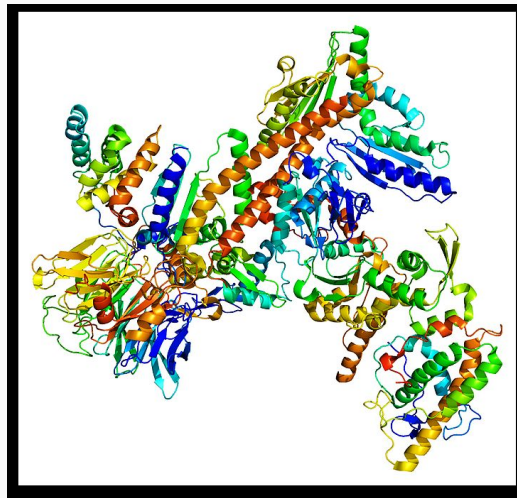
 45-1 Ramsey Road, Shirley, NY 11967, USA

signaling; Fc gamma R-mediated phagocytosis; Pathogenic Escherichia coli infection; RAC1 signaling pathway; Regulation of Actin Cytoskeleton; Salmonella infection; Shigellosis

Function

actin binding; protein binding; structural constituent of cytoskeleton

PDBrendering based
on 1k8k.



 Tel: 1-631-559-9269 1-516-512-3133

 Email: info@creative-biomart.com  Fax: 1-631-938-8127

 45-1 Ramsey Road, Shirley, NY 11967, USA