

Recombinant Human ARPC5 protein, GST-tagged

Cat. No. ARPC5-849H Lot. No. (See product label)

SPECIFICATION

Product Overview	Human ARPC5 full-length ORF (AAH57237, 1 a.a. - 154 a.a.) recombinant protein with GST-tag at N-terminal.
Species	Human
Source	Wheat Germ
Description	This gene encodes one of seven subunits of the human Arp2/3 protein complex. The Arp2/3 protein complex has been implicated in the control of actin polymerization in cells and has been conserved through evolution. The exact role of the protein encoded by this gene, the p16 subunit, has yet to be determined. Alternatively spliced transcript variants encoding different isoforms have been observed for this gene. [provided by RefSeq, Jul 2012]
Molecular Mass	42.68 kDa
AA Sequence	MSKNTVSSARFRKVDVDEYDENKFVDEEDGGDGGQAGPDEGEVDSCLRHSITGNMT AALQAALKNPPINTKSQAVKDRAGSIVLKVLI SFKANDIEKAVQSLDKNGVDLLMKYIY KGFESPSDNSSAMLLQWHEKALAAGGVGSIVRVLTARKTV
Applications	Enzyme-linked Immunoabsorbent Assay; Western Blot (Recombinant protein); Antibody Production; Protein Array
Notes	Best use within three months from the date of receipt of this protein.

 Tel: 1-631-559-9269 1-516-512-3133

 Email: info@creative-biomart.com  Fax: 1-631-938-8127

 45-1 Ramsey Road, Shirley, NY 11967, USA

Storage Store at -80 centigrade. Aliquot to avoid repeated freezing and thawing.

Storage Buffer 50 mM Tris-HCl, 10 mM reduced Glutathione, pH=8.0 in the elution buffer.

GENE INFORMATION

Gene Name [ARPC5 actin related protein 2/3 complex, subunit 5, 16kDa \[Homo sapiens \]](#)

Official Symbol [ARPC5](#)

Synonyms ARPC5; actin related protein 2/3 complex, subunit 5, 16kDa; actin related protein 2/3 complex, subunit 5 (16 kD); actin-related protein 2/3 complex subunit 5; ARC16; Arp2/3 protein complex subunit p16; dJ127C7.3; p16 Arc; arp2/3 complex 16 kDa subunit; p16-Arc; MGC88523;

Gene ID [10092](#)

mRNA Refseq [NM_005717](#)

Protein Refseq [NP_005708](#)

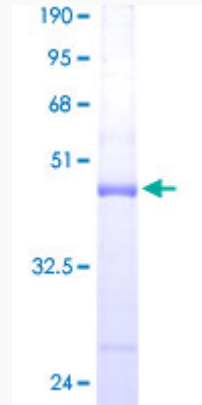
MIM [604227](#)

UniProt ID [O15511](#)

 Tel: 1-631-559-9269 1-516-512-3133

 Email: info@creative-biomart.com  Fax: 1-631-938-8127

 45-1 Ramsey Road, Shirley, NY 11967, USA



12.5% SDS-PAGE Stained with Coomassie Blue.

 Tel: 1-631-559-9269 1-516-512-3133

 Email: info@creative-biomart.com  Fax: 1-631-938-8127

 45-1 Ramsey Road, Shirley, NY 11967, USA