

## Recombinant Human ARPC5L protein, GST-tagged

**Cat. No.** ARPC5L-850H    **Lot. No.** (See product label)

### SPECIFICATION

<b>Product Overview</b>	Human ARPC5L full-length ORF ( NP_112240.1, 1 a.a. - 153 a.a.) recombinant protein with GST-tag at N-terminal.
<b>Species</b>	Human
<b>Source</b>	Wheat Germ
<b>Description</b>	ARPC5L (Actin Related Protein 2/3 Complex Subunit 5 Like) is a Protein Coding gene. Among its related pathways are Development Slit-Robo signaling and Salmonella infection (KEGG). GO annotations related to this gene include actin binding. An important paralog of this gene is ARPC5.
<b>Molecular Mass</b>	43.3 kDa
<b>AA Sequence</b>	MARNTLSSRFRRVDIDEFDENKFVDEQEEAAAAAAEPGPDPSEVDGLLRQGDMLRA FHAALRNSPVNTKNQAVKERAQGVVLKVLTNFKSSEIEQAVQSLDRNGVDLLMKYIY KGF EKPTENSSAVLLQWHEKALAVGGLGSIIRVLTARKTV
<b>Applications</b>	Enzyme-linked Immunoabsorbent Assay; Western Blot (Recombinant protein); Antibody Production; Protein Array
<b>Notes</b>	Best use within three months from the date of receipt of this protein.
<b>Storage</b>	Store at -80 centigrade. Aliquot to avoid repeated freezing and thawing.

 Tel: 1-631-559-9269    1-516-512-3133

 Email: [info@creative-biomart.com](mailto:info@creative-biomart.com)     Fax: 1-631-938-8127

 45-1 Ramsey Road, Shirley, NY 11967, USA

**Storage Buffer** 50 mM Tris-HCl, 10 mM reduced Glutathione, pH=8.0 in the elution buffer.

## GENE INFORMATION

**Gene Name** ARPC5L actin related protein 2/3 complex subunit 5 like [ Homo sapiens (human) ]

**Official Symbol** ARPC5L

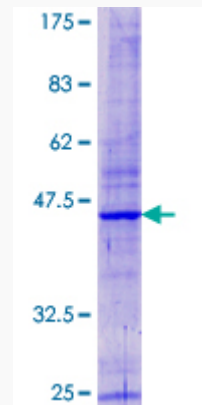
**Synonyms** ARPC5L; actin related protein 2/3 complex subunit 5 like; ARC16-2; actin-related protein 2/3 complex subunit 5-like protein; arp2/3 complex 16 kDa subunit 2

**Gene ID** 81873

**mRNA Refseq** NM\_030978

**Protein Refseq** NP\_112240

**UniProt ID** Q9BPX5



12.5% SDS-PAGE Stained with Coomassie Blue.

 Tel: 1-631-559-9269 1-516-512-3133

 Email: [info@creative-biomart.com](mailto:info@creative-biomart.com)  Fax: 1-631-938-8127

 45-1 Ramsey Road, Shirley, NY 11967, USA