

Recombinant Full Length Human ARSA Protein, C-Flag-tagged

Cat. No. ARSA-1847HFL **Lot. No.** (See product label)

SPECIFICATION

Product Overview	Recombinant Full Length Human ARSA Protein, fused to Flag-tag at C-terminus, was expressed in Mammalian cells.
Species	Human
Source	Mammalian Cells
Description	The protein encoded by this gene hydrolyzes cerebroside sulfate to cerebroside and sulfate. Defects in this gene lead to metachromatic leucodystrophy (MLD), a progressive demyelination disease which results in a variety of neurological symptoms and ultimately death. Alternatively spliced transcript variants have been described for this gene.
Form	25 mM Tris HCl, pH 7.3, 100 mM glycine, 10% glycerol.
Molecular Mass	51.9 kDa
AA Sequence	MSMGAPRSLLLALAAGLAVARPPNIVLIFADDLGYGDLGCGYGHPSSTTPNLDQLAAG GLRFTDFYVPVSL CTPSRAALLTGRLPVRMGMYPGVLVPSSRGGPLEEVTVAEVL AARGYLTMAGKWHLGVGPEGAFLPPH QGFHRFLGIPYSHDQGPCQNLTCFPPAT PCDGGCDQGLVPIPLLANLSVEAQPPWLPGLEARYMAFAHDL MADAQRQDRPFLL YYASHHHTYPQFSGQSFAERSGRGPFGLDLMELDAAVGTLMTAIGDLGELLEETLVIF TADNGPETMRMSRGGCSGLLRCGKGTTYEGGVREPALAFWPGHIAPGVTHELASS LDLLPTLAALAGAPL PNVTLDGFDLSPLLLGTGKSPRQSLFFYPSYPDEVRGVFAVR TGKYKAHFFTQGSAHSDTTADPACHASS SLTAHEPPLLYDLKDPGENYNLLGGVA

 Tel: 1-631-559-9269 1-516-512-3133

 Email: info@creative-biomart.com  Fax: 1-631-938-8127

 45-1 Ramsey Road, Shirley, NY 11967, USA

GATPEVLQALKQLQLLKAQLDAAVTFGPSQVARGEDPALQIC CHPGCTPRPACCHC
PDPHA TRTRPLEQKLISEEDLAANDILDYKDDDDKV

Purity	> 80% as determined by SDS-PAGE and Coomassie blue staining.
Stability	Stable for 12 months from the date of receipt of the product under proper storage and handling conditions. Avoid repeated freeze-thaw cycles.
Storage	Store at -80 centigrade.
Concentration	>50 ug/mL as determined by microplate BCA method.
Preparation	Recombinant protein was captured through anti-DDK affinity column followed by conventional chromatography steps.
Protein Families	Druggable Genome
Protein Pathways	Lysosome, Sphingolipid metabolism
Full Length	Full L.

GENE INFORMATION

Gene Name	ARSA arylsulfatase A [Homo sapiens (human)]
Official Symbol	ARSA
Synonyms	ASA; MLD
Gene ID	410

 Tel: 1-631-559-9269 1-516-512-3133

 Email: info@creative-biomart.com  Fax: 1-631-938-8127

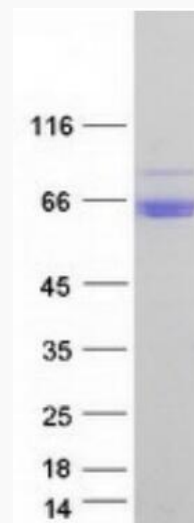
 45-1 Ramsey Road, Shirley, NY 11967, USA

mRNA Refseq [NM_001085425.3](#)

Protein Refseq [NP_001078894.2](#)

MIM [607574](#)

UniProt ID [P15289](#)



Coomassie blue staining of purified ARSA protein.

 Tel: 1-631-559-9269 1-516-512-3133

 Email: info@creative-biomart.com  Fax: 1-631-938-8127

 45-1 Ramsey Road, Shirley, NY 11967, USA