

## Active Recombinant Human ARSA protein, His tagged

Cat. No. ARSA-2324H Lot. No. (See product label)

### SPECIFICATION

<b>Product Overview</b>	Active Recombinant Human ARSA protein(NP_000478.2) (Met 1-Ala 507) was expressed in HEK293 with a C-terminal polyhistidine tag.
<b>Species</b>	Human
<b>Source</b>	HEK293
<b>ProteinLength</b>	1-507 aa
<b>Form</b>	Lyophilized from sterile 25mM Tris, 0.15mM NaCl, pH 7.5.
<b>Bio-activity</b>	Measured by its ability to hydrolyze the substrate 4-Nitrocatechol Sulfate (PNCS). The specific activity is >50 pmoles/min/μg.
<b>Molecular Mass</b>	The recombinant human ARSA consists of 500 amino acids and predicts a molecular mass of 53 kDa. as estimated by SDS-PAGE under reducing conditions.
<b>Endotoxin</b>	< 1.0 EU per μg protein as determined by the LAL method.
<b>Purity</b>	> 97 % as determined by SDS-PAGE
<b>Storage</b>	Store it under sterile conditions at -20°C to -80°C upon receiving. Recommend to aliquot the protein into smaller quantities for optimal storage. Avoid repeated freeze-thaw cycles.

 Tel: 1-631-559-9269 1-516-512-3133

 Email: [info@creative-biomart.com](mailto:info@creative-biomart.com)  Fax: 1-631-938-8127

 45-1 Ramsey Road, Shirley, NY 11967, USA

**Reconstitution** It is recommended that sterile water be added to the vial to prepare a stock solution of 0.2 ug/ul. Centrifuge the vial at 4°C before opening to recover the entire contents.

## GENE INFORMATION

**Gene Name** [ARSA arylsulfatase A \[ Homo sapiens \]](#)

**Official Symbol** [ARSA](#)

**Synonyms** ARSA; arylsulfatase A; metachromatic leucodystrophy; ASA; cerebroside-sulfatase; MLD;

**Gene ID** [410](#)

**mRNA Refseq** [NM\\_000487](#)

**Protein Refseq** [NP\\_000478](#)

**MIM** [607574](#)

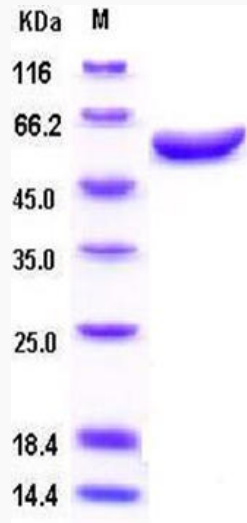
**UniProt ID** [P15289](#)

 Tel: 1-631-559-9269 1-516-512-3133

 Email: [info@creative-biomart.com](mailto:info@creative-biomart.com)  Fax: 1-631-938-8127

 45-1 Ramsey Road, Shirley, NY 11967, USA

SDS-PAGE



 Tel: 1-631-559-9269 1-516-512-3133

 Email: [info@creative-biomart.com](mailto:info@creative-biomart.com)  Fax: 1-631-938-8127

 45-1 Ramsey Road, Shirley, NY 11967, USA