

Recombinant Full Length Human ARSB Protein, C-Flag-tagged

Cat. No. ARSB-1862HFL **Lot. No.** (See product label)

SPECIFICATION

Product Overview	Recombinant Full Length Human ARSB Protein, fused to Flag-tag at C-terminus, was expressed in Mammalian cells.
Species	Human
Source	Mammalian Cells
Description	Arylsulfatase B encoded by this gene belongs to the sulfatase family. The arylsulfatase B homodimer hydrolyzes sulfate groups of N-Acetyl-D-galactosamine, chondroitin sulfate, and dermatan sulfate. The protein is targeted to the lysosome. Mucopolysaccharidosis type VI is an autosomal recessive lysosomal storage disorder resulting from a deficiency of arylsulfatase B. Two alternatively spliced transcript variants encoding distinct isoforms have been found for this gene.
Form	25 mM Tris HCl, pH 7.3, 100 mM glycine, 10% glycerol.
Molecular Mass	56 kDa
AA Sequence	<p>MGPRGAASLPRGPGPRRLLLLPVVLPLLLLLLLAPPGSGAGASRPPHLVFLADDLGW NDVGFHGSRI RTP HLDALAAGGVLLDNYYTQPLCTPSRSQLLTGRYQIRTGLQHQII WPCQPSCVPLDEKLLPQLLKEAGYTT HMVGKWHLGMYRKECLPTRRGFDTYFGYL LGSEDIYYSHERCTLIDALNVTRCALDFRDGEEVATGYKNMY STNIFTKRAIALITNHP PEKPLFLYLALQSVHEPLQVPEEYLPYDFIQDKNRHHYAGMVSLMDEAVGNV TAA LKSSGLWNNTVFIFSTDNGGQTLAGGNNWPLRGRKWSLWEGGVRGVGFVASPLLK QKGVKNRELIHI SDWLPTLVKLARGHTNGTKPLDGFVWKTISEGSPSPRIELLHNID</p>

 Tel: 1-631-559-9269 1-516-512-3133

 Email: info@creative-biomart.com  Fax: 1-631-938-8127

 45-1 Ramsey Road, Shirley, NY 11967, USA

PNFVDSSPCPRNSMAPAKDDSSLP EYSAFNTSVHAAIRHGNWKLTTGYPGCGYWF
 PPSQYNVSEIPSSDPPTKTLWLFDIRDPEERHDLRSRE YPHIVTKLLSRLQFYHKK
 SVPVYFPAQDPRCDPKATGVWGPWM TRTRPLEQKLISEEDLAANDILDYKDDDDK
 V

Purity	> 80% as determined by SDS-PAGE and Coomassie blue staining.
Stability	Stable for 12 months from the date of receipt of the product under proper storage and handling conditions. Avoid repeated freeze-thaw cycles.
Storage	Store at -80 centigrade.
Concentration	>50 ug/mL as determined by microplate BCA method.
Preparation	Recombinant protein was captured through anti-DDK affinity column followed by conventional chromatography steps.
Protein Families	Druggable Genome
Protein Pathways	Glycosaminoglycan degradation, Lysosome, Metabolic pathways
Full Length	Full L.

GENE INFORMATION

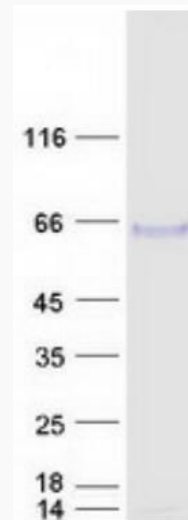
Gene Name	ARSB arylsulfatase B [Homo sapiens (human)]
Official Symbol	ARSB
Synonyms	ASB; G4S; MPS6

 Tel: 1-631-559-9269 1-516-512-3133

 Email: info@creative-biomart.com  Fax: 1-631-938-8127

 45-1 Ramsey Road, Shirley, NY 11967, USA

Gene ID	411
mRNA Refseq	NM_000046.5
Protein Refseq	NP_000037.2
MIM	611542
UniProt ID	P15848



Coomassie blue staining of purified ARSB protein.

Tel: 1-631-559-9269 1-516-512-3133

Email: info@creative-biomart.com Fax: 1-631-938-8127

45-1 Ramsey Road, Shirley, NY 11967, USA