

# Recombinant Human ARSD Protein, Myc/DDK-tagged, C13 and N15-labeled

**Cat. No.** ARSD-1748H    **Lot. No.** (See product label)

## SPECIFICATION

### Product Overview

ARSD MS Standard C13 and N15-labeled recombinant protein (NP\_001660) with a C-terminal MYC/DDK tag, was expressed in HEK293 cells.

### Species

Human

### Source

HEK293

### Description

The protein encoded by this gene is a member of the sulfatase family. Sulfatases are essential for the correct composition of bone and cartilage matrix. The encoded protein is postrationally glycosylated and localized to the lysosome. This gene is located within a cluster of similar arylsulfatase genes on chromosome X. A related pseudogene has been identified in the pseudoautosomal region of chromosome Y.

### Molecular Mass

64.86 kDa

### AA Sequence

MRSAARRGRAAPAARDSLPVLLFLCLLLKTCEPKTANAFKPNILLIMADDLGTGDLGC  
YGNNTLRTPNIDQLAEEGVRLTQHLLAAAPLCTPSRAAFLTGRHSFRSGMDASNGYR  
ALQWNAGSGGLPENETTFARILQQHGYATGLIGKWHQGVNCASRGDHCHHPLNHG  
FDYFYGMPFTLTNDGDPGRPPEVDAALRAQLWGYTQFLALGILTLAGQTCGFFSV  
SARAVTGMAGVGCLFFISWYSSFGFVRRWNCILMRNHVTEQPMVLEKTASLMLKE  
AVSYIERHKHGPFLFLSLLHVHIPLVTTSAFLGKSQHGLYGDNVEEMDWLIGKVLNA  
IEDNGLKNSTFTYFTSDHGGHLEARDGHSQGGWNGIYKGGKGMGGWEGGIRVPG  
IFHWPGVLPAGRVIGEPTSLMDVFPTVVQLVGGVEPQDRVIDGHSLVPLLQGAEARS

 Tel: 1-631-559-9269    1-516-512-3133

 Email: [info@creative-biomart.com](mailto:info@creative-biomart.com)     Fax: 1-631-938-8127

 45-1 Ramsey Road, Shirley, NY 11967, USA

AHEFLFHYCGQHLHAARWHQKDSGSVWVKVHYTTPQFHPEGAGACYGRGVPCPSG  
 EGVTHHRPPLLFDLSRDPSEARPLTPDSEPLYHAVIARVGAAVSEHRQTLSPVPQQF  
 SMSNILWKPWLQPCCGHFPFCSCHEGDGTPTRTRPLEQKLISEEDLAANDILDYK  
 DDDDKV

**Purity** > 80% as determined by SDS-PAGE and Coomassie blue staining

**Stability** Stable for 3 months from receipt of products under proper storage and handling conditions.

**Storage** Store at -80 centigrade. Avoid repeated freeze-thaw cycles.

**Concentration** 50 µg/mL as determined by BCA

**Storage Buffer** 100 mM glycine, 25 mM Tris-HCl, pH 7.3.

## GENE INFORMATION

**Gene Name** [ARSD arylsulfatase D \[ Homo sapiens \(human\) \]](#)

**Official Symbol** [ARSD](#)

**Synonyms** ARSD; arylsulfatase D; ASD; arylsulfatase D; testis tissue sperm-binding protein Li 39a; EC 3.1.6.1

**Gene ID** [414](#)

**mRNA Refseq** [NM\\_001669](#)

**Protein Refseq** [NP\\_001660](#)

 Tel: 1-631-559-9269 1-516-512-3133

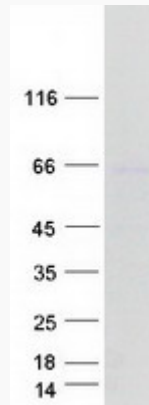
 Email: [info@creative-biomart.com](mailto:info@creative-biomart.com)  Fax: 1-631-938-8127

 45-1 Ramsey Road, Shirley, NY 11967, USA

**MIM** 300002

**UniProt ID** P51689

**SDS-PAGE**



 Tel: 1-631-559-9269 1-516-512-3133

 Email: [info@creative-biomart.com](mailto:info@creative-biomart.com)  Fax: 1-631-938-8127

 45-1 Ramsey Road, Shirley, NY 11967, USA