

Recombinant Full Length Human ARSG Protein, C-Flag-tagged

Cat. No. ARSG-2059HFL **Lot. No.** (See product label)

SPECIFICATION

Product Overview	Recombinant Full Length Human ARSG Protein, fused to Flag-tag at C-terminus, was expressed in Mammalian cells.
Species	Human
Source	Mammalian Cells
Description	The protein encoded by this gene belongs to the sulfatase enzyme family. Sulfatases hydrolyze sulfate esters from sulfated steroids, carbohydrates, proteoglycans, and glycolipids. They are involved in hormone biosynthesis, modulation of cell signaling, and degradation of macromolecules. This protein displays arylsulfatase activity at acidic pH, as is typical of lysosomal sulfatases, and has been shown to localize in the lysosomes. Alternatively spliced transcript variants have been found for this gene.
Form	25 mM Tris HCl, pH 7.3, 100 mM glycine, 10% glycerol.
Molecular Mass	56.9 kDa
AA Sequence	<p>MGWLFLKVLLAGVSFSGFLYPLVDFCISGKTRGQKPNFVILADDMGWGDLGANWA ETKDTANLDKMASE GMRFVDFHAAASTCSPSRASLLTGRLGLRNGVTRNFAVTSV GGLPLNETTLAEVLQQAGYVTGIIGKWHL GHHGSYHPNFRGFDYYFGIPYSHDMGC TDTPGYNHPPCPAC PQGDGPSRNLQRDCYTDVALPLYENLNIV EQPVNLSSLAQKY AEKATQFIQRASTSGRPFLLYVALAHMHVPLPVTQLPAAPRGRSLYGAGLWEMDSL V GQIKDKVDHTVKENTFLWFTGDNGPWAQKCELAGSVGPFTGFWQTRQGGSPAK QTTWEGGHRVPALAYWP GRVPVNVSTALLSVLDIFPTVVALAQASLPQGRRFDG</p>

 Tel: 1-631-559-9269 1-516-512-3133

 Email: info@creative-biomart.com  Fax: 1-631-938-8127

 45-1 Ramsey Road, Shirley, NY 11967, USA

VDVSEVLFGRSQPGHRVLFHPNSGAAGEFGAL QTVRLERYKAFYITGGARACDGS
 TGPELQHKFPLIFNLEDDTAEAVPLERGGAEYQAVLPEVRKVLADVL QDIANDNISS
 ADYTQDPSVTPCCNPYQIACRCQAA TRTRPLEQKLISEEDLAANDILDYKDDDDKV

Purity	> 80% as determined by SDS-PAGE and Coomassie blue staining.
Stability	Stable for 12 months from the date of receipt of the product under proper storage and handling conditions. Avoid repeated freeze-thaw cycles.
Storage	Store at -80 centigrade.
Concentration	>50 ug/mL as determined by microplate BCA method.
Preparation	Recombinant protein was captured through anti-DDK affinity column followed by conventional chromatography steps.
Protein Families	Druggable Genome
Protein Pathways	Lysosome
Full Length	Full L.

GENE INFORMATION

Gene Name	ARSG arylsulfatase G [Homo sapiens (human)]
Official Symbol	ARSG
Synonyms	USH4
Gene ID	22901

 Tel: 1-631-559-9269 1-516-512-3133

 Email: info@creative-biomart.com  Fax: 1-631-938-8127

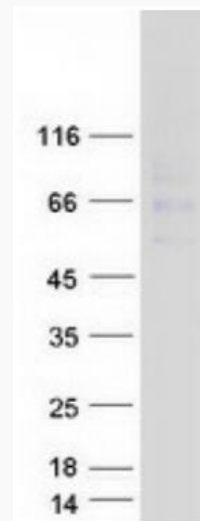
 45-1 Ramsey Road, Shirley, NY 11967, USA

mRNA Refseq [NM_014960.5](#)

Protein Refseq [NP_055775.2](#)

MIM [610008](#)

UniProt ID [Q96EG1](#)



Coomassie blue staining of purified ARSG protein.

 Tel: 1-631-559-9269 1-516-512-3133

 Email: info@creative-biomart.com  Fax: 1-631-938-8127

 45-1 Ramsey Road, Shirley, NY 11967, USA