

Recombinant Human ARSG protein, GST-tagged

Cat. No. ARSG-865H **Lot. No.** (See product label)

SPECIFICATION

Product Overview	Human ARSG full-length ORF (NP_055775.2, 1 a.a. - 525 a.a.) recombinant protein with GST-tag at N-terminal.
Species	Human
Source	Wheat Germ
Description	The protein encoded by this gene belongs to the sulfatase enzyme family. Sulfatases hydrolyze sulfate esters from sulfated steroids, carbohydrates, proteoglycans, and glycolipids. They are involved in hormone biosynthesis, modulation of cell signaling, and degradation of macromolecules. This protein displays arylsulfatase activity at acidic pH, as is typical of lysosomal sulfatases, and has been shown to localize in the lysosomes. Alternatively spliced transcript variants have been found for this gene. [provided by RefSeq, Jun 2012]
Molecular Mass	83.5 kDa
AA Sequence	<p>MGWLFLKVLLAGVSFSGFLYPLVDFCISGKTRGQKPNFVILADDMGWGDLGANWA ETKDTANLDKMASEGMRVDFHAAASTCSPSRASLLTGRLGLRNGVTRNFAVTSVG GLPLNETTLAEVLQQAGYVTGIIGKWHLGHGSHYHPNFRGFDYYFGIPYSHDMGCT DTPGYNHPPCPACPQGDGPSRNLQRDCYTDVALPLYENLNIVEQPVNLSSLAQKYA EKATQFIQRASTSGRPFLLYVALAHMHVPLPVTQLPAAPRGRSLYGAGLWEMDSL V GQIKDKVDHTVKENTFLWFTGDNGPWAQKCELAGSVGPFTGFWQTRQGGSPAKQ TTWEGGHRVPALAYWPGRVPVNVSTALLSVLDIFPTVVALAQASLPQGRRFDGVD</p>

 Tel: 1-631-559-9269 1-516-512-3133

 Email: info@creative-biomart.com  Fax: 1-631-938-8127

 45-1 Ramsey Road, Shirley, NY 11967, USA

VSEVLFGRSQPGHRVLFHPNSGAAGEFGALQTVRLERYKAFYITGGARACDGSTGP
 ELQHKFPLIFNLEDDTAEAVPLERGGAEYQAVLPEVRKVLADVLQDIANDNISSADYT
 QDPSVTPCCNPYQIACRCQAA

Applications

Enzyme-linked Immunoabsorbent Assay; Western Blot (Recombinant protein);
 Antibody Production; Protein Array

Notes

Best use within three months from the date of receipt of this protein.

Storage

Store at -80 centigrade. Aliquot to avoid repeated freezing and thawing.

Storage Buffer

50 mM Tris-HCl, 10 mM reduced Glutathione, pH=8.0 in the elution buffer.

GENE INFORMATION

Gene Name

[ARSG arylsulfatase G \[Homo sapiens \]](#)

Official Symbol

[ARSG](#)

Synonyms

ARSG; arylsulfatase G; KIAA1001; ASG;

Gene ID

[22901](#)

mRNA Refseq

[NM_014960](#)

Protein Refseq

[NP_055775](#)

MIM

[610008](#)

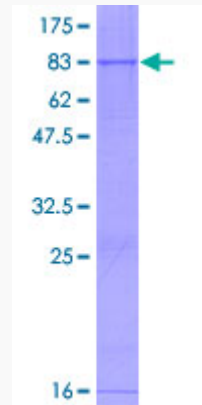
UniProt ID

[Q96EG1](#)

 Tel: 1-631-559-9269 1-516-512-3133

 Email: info@creative-biomart.com  Fax: 1-631-938-8127

 45-1 Ramsey Road, Shirley, NY 11967, USA



12.5% SDS-PAGE Stained with Coomassie Blue.

 Tel: 1-631-559-9269 1-516-512-3133

 Email: info@creative-biomart.com  Fax: 1-631-938-8127

 45-1 Ramsey Road, Shirley, NY 11967, USA