

Recombinant Human ART1 Protein (23-295 aa), His-tagged

Cat. No. ART1-1335H **Lot. No.** (See product label)

SPECIFICATION

Product Overview	Recombinant Human ART1 Protein (23-295 aa) is produced by Yeast expression system. This protein is fused with a 6xHis tag at the N-terminal. Research Area: Epigenetics and Nuclear Signaling. Protein Description: Full Length of Mature Protein.
Species	Human
Source	Yeast
ProteinLength	23-295 aa
Description	Has ADP-ribosyltransferase activity toward GLP1R.
Form	Tris-based buffer,50% glycerol
Molecular Mass	32.5 kDa
AA Sequence	QSHPI TRRDLFSQEIQ LDMALASFDDQYAGCAAAMTAALPDLNHTEFQANQVYADS WTLASSQWQERQARWPEWSLSPTRPSPPLGFRDEHGVALLAYTANSPLHKEFNA AVREAGRSRAHYLHHFSFKTLHFLLEALQLLGGSGQRPPRCHQVFRGVHGLRFRPA GPRATVRLGGFASASLKHVAAQQFGEDTFFGIWTCLGAPIKGYSSFFPGEEVLIPPF ETFQVINASRLAQGPARIYLRALGKHSTYNCEYIKDKKCKSGPCHLDNS
Purity	> 90% as determined by SDS-PAGE.
Notes	Repeated freezing and thawing is not recommended. Store working aliquots at 4

 Tel: 1-631-559-9269 1-516-512-3133

 Email: info@creative-biomart.com  Fax: 1-631-938-8127

 45-1 Ramsey Road, Shirley, NY 11967, USA

centigrade for up to one week.

Storage

The shelf life is related to many factors, storage state, buffer ingredients, storage temperature and the stability of the protein itself. Generally, the shelf life of liquid form is 6 months at -20 centigrade/-80 centigrade. The shelf life of lyophilized form is 12 months at -20 centigrade/-80 centigrade.

Concentration

A hardcopy of COA with reconstitution instruction is sent along with the products. Please refer to it for detailed information.

GENE INFORMATION

Gene Name [ART1 ADP-ribosyltransferase 1 \[Homo sapiens \]](#)

Official Symbol [ART1](#)

Synonyms [ART1](#); [ART2](#); [CD296](#); [RT6](#); [MGC133217](#);

Gene ID [417](#)

mRNA Refseq [NM_004314](#)

Protein Refseq [NP_004305](#)

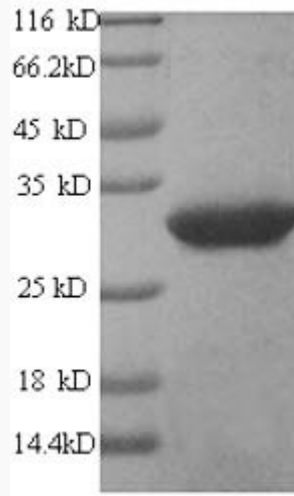
MIM [601625](#)

UniProt ID [P52961](#)

 Tel: 1-631-559-9269 1-516-512-3133

 Email: info@creative-biomart.com  Fax: 1-631-938-8127

 45-1 Ramsey Road, Shirley, NY 11967, USA



(Tris-Glycine gel) Discontinuous SDS-PAGE (reduced) with 5% enrichment gel and 15% separation gel.

 Tel: 1-631-559-9269 1-516-512-3133

 Email: info@creative-biomart.com  Fax: 1-631-938-8127

 45-1 Ramsey Road, Shirley, NY 11967, USA