

Recombinant Human ART1 Protein (Met1-Ser295), C-His tagged

Cat. No. ART1-4516H **Lot. No.** (See product label)

SPECIFICATION

Product Overview	Recombinant human ART1 (Met1-Ser295) fused with the C-terminal His tag was expressed in Mammalian cells.
Species	Human
Source	Mammalian Cells
ProteinLength	Met1-Ser295
Form	Lyophilized powder/frozen liquid
Molecular Mass	32.45 kDa
Endotoxin	< 1.0 EU/μg of the protein as determined by the LAL method.
Purity	>90% as determined by SDS-PAGE.
Notes	For research use only.
Storage	Use a manual defrost freezer and avoid repeated freeze thaw cycles. Store at 2 to 8 centigrade for one week. Store at -20 to -80 centigrade for twelve months from the date of receipt.
Storage Buffer	Supplied as solution form in PBS or lyophilized from PBS.

 Tel: 1-631-559-9269 1-516-512-3133

 Email: info@creative-biomart.com  Fax: 1-631-938-8127

 45-1 Ramsey Road, Shirley, NY 11967, USA

Reconstitution Reconstitute in sterile water for a stock solution.

Shipping They are shipped out with dry ice/blue ice unless customers require otherwise.

GENE INFORMATION

Gene Name [ART1 ADP-ribosyltransferase 1 \[Homo sapiens \(human\) \]](#)

Official Symbol [ART1](#)

Synonyms ART1; ADP-ribosyltransferase 1; GPI-linked NAD (P) (+) --arginine ADP-ribosyltransferase 1; ART2; CD296; ADP-ribosyltransferase 2; mono (ADP-ribosyl) transferase 1; RT6; MGC133217;

Gene ID [417](#)

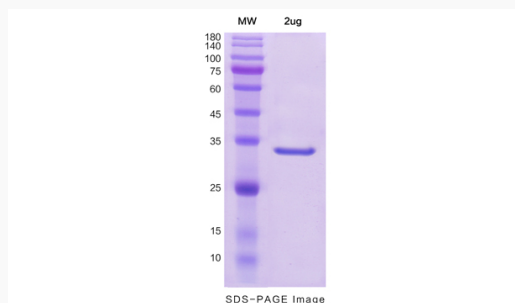
mRNA Refseq [NM_004314](#)

Protein Refseq [NP_004305](#)

MIM [601625](#)

UniProt ID [P52961](#)

SDS-PAGE



 Tel: 1-631-559-9269 1-516-512-3133

 Email: info@creative-biomart.com  Fax: 1-631-938-8127

 45-1 Ramsey Road, Shirley, NY 11967, USA