

Recombinant Human ART4 Protein, His-tagged

Cat. No. ART4-101H **Lot. No.** (See product label)

SPECIFICATION

| | |
|-------------------------|---|
| Product Overview | Recombinant Human ART4 Protein with His tag was expressed in E. coli. |
| Species | Human |
| Source | E.coli |
| Description | This gene encodes a protein that contains a mono-ADP-ribosylation (ART) motif. It is a member of the ADP-ribosyltransferase gene family but enzymatic activity has not been demonstrated experimentally. |
| Molecular Mass | ~30 kDa |
| AA Sequence | SEVAIKIDFD FAPGSFDDQYQGCSKQVMEKLTQG DYFTKDIEAQKNYFRMWQKAHL AWLNQGKVL PQNM TTT HAVAILFYTLNSNVHSD FTRAMASVARTPQQYERSFHF KY LHYYLTSAIQ LLRKDSIMENGLCYEVHYRTKDVHFNAYTGATIRFGQFLST SLLKEE AQEFGNQTLFTIFTCLGAPVQYFSLKKEVLIPPYELFKVINMSYHPRGNWLQLRSTGN LSTYNCQLLKA |
| Purity | Transferred into competent cells and the supernatant was purified by NI column affinity chromatography and the purity is > 85% (by SDS-PAGE). |
| Notes | For research use only, not for use in diagnostic procedure. |
| Storage | Store at 4 centigrade short term. Aliquot and store at -20 centigrade long term. Avoid freeze-thaw cycles. |

 Tel: 1-631-559-9269 1-516-512-3133

 Email: info@creative-biomart.com  Fax: 1-631-938-8127

 45-1 Ramsey Road, Shirley, NY 11967, USA

Storage Buffer PBS, 4M Urea, pH7.4

GENE INFORMATION

Gene Name [ART4 ADP-ribosyltransferase 4 \(Dombrock blood group\) \[Homo sapiens \(human\) \]](#)

Official Symbol [ART4](#)

Synonyms ART4; ADP-ribosyltransferase 4 (Dombrock blood group); ADP ribosyltransferase 4 , ADP ribosyltransferase 4 (DO blood group) , DO, Dombrock blood group; ecto-ADP-ribosyltransferase 4; CD297; DOK1; mono-ADP-ribosyltransferase 4; mono(ADP-ribosyl)transferase 4; Dombrock blood group carrier molecule; ADP-ribosyltransferase 4 (DO blood group); NAD(P)(+)-arginine ADP-ribosyltransferase 4; DO;

Gene ID [420](#)

mRNA Refseq [NM_021071](#)

Protein Refseq [NP_066549](#)

MIM [110600](#)

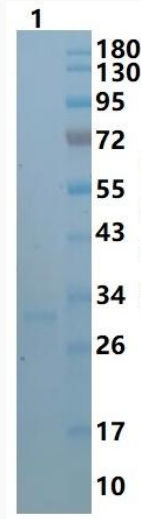
UniProt ID [Q93070](#)

 Tel: 1-631-559-9269 1-516-512-3133

 Email: info@creative-biomart.com  Fax: 1-631-938-8127

 45-1 Ramsey Road, Shirley, NY 11967, USA

SDS-PAGE



 Tel: 1-631-559-9269 1-516-512-3133

 Email: info@creative-biomart.com  Fax: 1-631-938-8127

 45-1 Ramsey Road, Shirley, NY 11967, USA