

Recombinant Human ART4 Protein (Met1-Val314), C-His tagged

Cat. No. ART4-4528H **Lot. No.** (See product label)

SPECIFICATION

Product Overview	Recombinant human ART4 (Met1-Val314) fused with the C-terminal His tag was expressed in Mammalian cells.
Species	Human
Source	Mammalian Cells
ProteinLength	Met1-Val314
Form	Lyophilized powder/frozen liquid
Molecular Mass	34.54 kDa
Endotoxin	< 1.0 EU/μg of the protein as determined by the LAL method.
Purity	>90% as determined by SDS-PAGE.
Notes	For research use only.
Storage	Use a manual defrost freezer and avoid repeated freeze thaw cycles. Store at 2 to 8 centigrade for one week. Store at -20 to -80 centigrade for twelve months from the date of receipt.
Storage Buffer	Supplied as solution form in PBS or lyophilized from PBS.

 Tel: 1-631-559-9269 1-516-512-3133

 Email: info@creative-biomart.com  Fax: 1-631-938-8127

 45-1 Ramsey Road, Shirley, NY 11967, USA

Reconstitution Reconstitute in sterile water for a stock solution.

Shipping They are shipped out with dry ice/blue ice unless customers require otherwise.

GENE INFORMATION

Gene Name [ART4 ADP-ribosyltransferase 4 \(Dombrock blood group\) \[Homo sapiens \(human\) \]](#)

Official Symbol [ART4](#)

Synonyms

ART4; ADP-ribosyltransferase 4 (Dombrock blood group); ADP ribosyltransferase 4, ADP ribosyltransferase 4 (DO blood group), DO, Dombrock blood group; ecto-ADP-ribosyltransferase 4; CD297; DOK1; mono-ADP-ribosyltransferase 4; mono (ADP-ribosyl) transferase 4; Dombrock blood group carrier molecule; ADP-ribosyltransferase 4 (DO blood group); NAD (P) (+) --arginine ADP-ribosyltransferase 4; DO;

Gene ID [420](#)

mRNA Refseq [NM_021071](#)

Protein Refseq [NP_066549](#)

MIM [110600](#)

UniProt ID [Q93070](#)

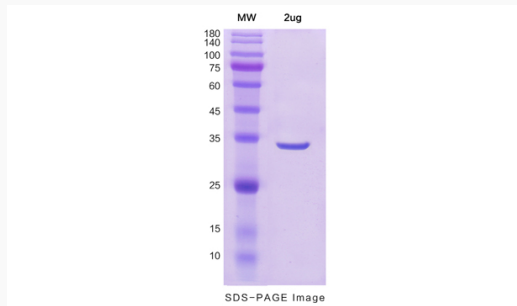
 Tel: 1-631-559-9269 1-516-512-3133

 Email: info@creative-biomart.com  Fax: 1-631-938-8127

 45-1 Ramsey Road, Shirley, NY 11967, USA



SDS-PAGE



Tel: 1-631-559-9269 1-516-512-3133

Email: info@creative-biomart.com Fax: 1-631-938-8127

45-1 Ramsey Road, Shirley, NY 11967, USA