

## Recombinant Human ART5 protein, GST-tagged

**Cat. No.** ART5-871H    **Lot. No.** (See product label)

### SPECIFICATION

<b>Product Overview</b>	Human ART5 full-length ORF ( AAH14577.1, 1 a.a. - 292 a.a.) recombinant protein with GST-tag at N-terminal.
<b>Species</b>	Human
<b>Source</b>	Wheat Germ
<b>Description</b>	The protein encoded by this gene belongs to the ARG-specific ADP-ribosyltransferase family. Proteins in this family regulate the function of target proteins by attaching ADP-ribose to specific amino acid residues in their target proteins. The mouse homolog lacks a glycosylphosphatidylinositol-anchor signal sequence and is predicted to be a secretory enzyme. Several transcripts encoding different isoforms have been found for this gene. [provided by RefSeq, Jul 2014]
<b>Molecular Mass</b>	58.6 kDa
<b>AA Sequence</b>	MALAALMIALGSLGLHTWQAQAVPTILPLGLAPDTFDDTYVGCVEEMEEKAAPLLKE EMAHHALLRESWEAAQETWEDKRRGLTLPFGKAQNGIAIMVYTNSNTLYWELNQ AVRTGGGSRELYMRHFPPKALHFYLIRALQLLRGSGGCSRGPGEVVFRGVGSLRFE PKRLGDSVRLGQFASSSLDKAVAHFRGNATLFSLTTCFGAPIQAFSVFPKEREVLIPP HEVFLVTRFSQDGAQSLVTLWSYNQTCSHFNCAYLGG EKRRGCVSAPGALGTGDL HMTKRHLQQP
<b>Applications</b>	Enzyme-linked Immunoabsorbent Assay; Western Blot (Recombinant protein); Antibody Production; Protein Array

 Tel: 1-631-559-9269    1-516-512-3133

 Email: [info@creative-biomart.com](mailto:info@creative-biomart.com)     Fax: 1-631-938-8127

 45-1 Ramsey Road, Shirley, NY 11967, USA

<b>Notes</b>	Best use within three months from the date of receipt of this protein.
<b>Storage</b>	Store at -80 centigrade. Aliquot to avoid repeated freezing and thawing.
<b>Storage Buffer</b>	50 mM Tris-HCl, 10 mM reduced Glutathione, pH=8.0 in the elution buffer.

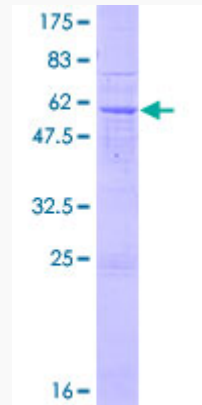
## GENE INFORMATION

<b>Gene Name</b>	ART5 ADP-ribosyltransferase 5 [ Homo sapiens ]
<b>Official Symbol</b>	ART5
<b>Synonyms</b>	ART5; ADP-ribosyltransferase 5; ecto-ADP-ribosyltransferase 5; mono(ADP-ribosyl)transferase 5; NAD(P)(+)-arginine ADP-ribosyltransferase 5; MGC22848;
<b>Gene ID</b>	116969
<b>mRNA Refseq</b>	NM_001079536
<b>Protein Refseq</b>	NP_001073004
<b>MIM</b>	610625
<b>UniProt ID</b>	Q96L15

 Tel: 1-631-559-9269 1-516-512-3133

 Email: [info@creative-biomart.com](mailto:info@creative-biomart.com)  Fax: 1-631-938-8127

 45-1 Ramsey Road, Shirley, NY 11967, USA



12.5% SDS-PAGE Stained with Coomassie Blue.

 Tel: 1-631-559-9269 1-516-512-3133

 Email: [info@creative-biomart.com](mailto:info@creative-biomart.com)  Fax: 1-631-938-8127

 45-1 Ramsey Road, Shirley, NY 11967, USA