

## Recombinant Human ARTN protein, hFc-tagged

Cat. No. ARTN-5643H Lot. No. (See product label)

### SPECIFICATION

<b>Product Overview</b>	Recombinant Human ARTN protein(Q5T4W7-1)(Ala108-Gly220), fused with N-terminal hFc tag, was expressed in HEK293.
<b>Species</b>	Human
<b>Source</b>	HEK293
<b>ProteinLength</b>	Ala108-Gly220
<b>Tag</b>	N-hFc
<b>Form</b>	Lyophilized from 0.22µm filtered solution in 4mM HCl (pH 2.8). Normally 8% trehalose is added as protectant before lyophilization.
<b>Bio-activity</b>	Immobilized Human GFRA3, His Tag at 5ug/ml (100ul/well) on the plate. Dose response curve for Human ARTN, hFc Tag with the EC50 of 92.5ng/ml determined by ELISA (QC Test).
<b>Molecular Mass</b>	The protein has a predicted MW of 39.3 kDa. Due to glycosylation, the protein migrates to 48-52 kDa based on Tris-Bis PAGE result.
<b>Endotoxin</b>	Less than 1EU per µg by the LAL method.
<b>Purity</b>	> 95% as determined by Tris-Bis PAGE;> 95% as determined by HPLC

 Tel: 1-631-559-9269 1-516-512-3133

 Email: [info@creative-biomart.com](mailto:info@creative-biomart.com)  Fax: 1-631-938-8127

 45-1 Ramsey Road, Shirley, NY 11967, USA

**Storage** Reconstituted protein stable at -80°C for 12 months, 4°C for 1 week. Use a manual defrost freezer and avoid repeated freeze-thaw cycles.

**Reconstitution** Centrifuge tubes before opening. Reconstituting to a concentration more than 100 µg/ml is recommended. Dissolve the lyophilized protein in 4mM HCl (pH2.8).

## GENE INFORMATION

**Gene Name** ARTN artemin [ Homo sapiens ]

**Official Symbol** ARTN

**Synonyms** ARTN; artemin; ENOVIN; EVN; NBN; neublastin; neurotrophic factor;

**Gene ID** 9048

**mRNA Refseq** NM\_001136215

**Protein Refseq** NP\_001129687

**MIM** 603886

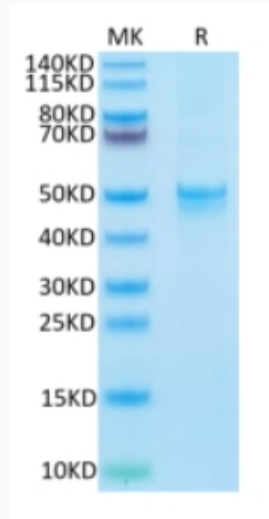
**UniProt ID** Q5T4W7

 Tel: 1-631-559-9269 1-516-512-3133

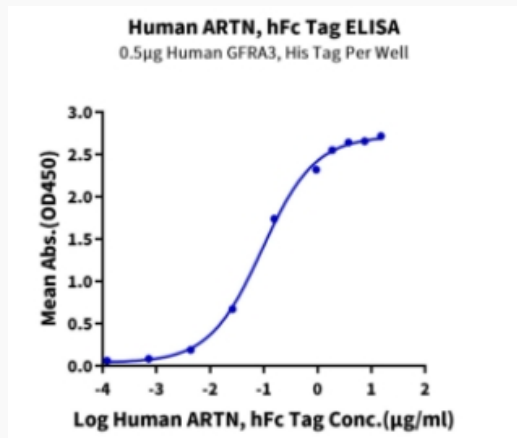
 Email: [info@creative-biomart.com](mailto:info@creative-biomart.com)  Fax: 1-631-938-8127

 45-1 Ramsey Road, Shirley, NY 11967, USA

**Tris-Bis PAGE**



**ELISA Data**



 Tel: 1-631-559-9269 1-516-512-3133

 Email: [info@creative-biomart.com](mailto:info@creative-biomart.com)  Fax: 1-631-938-8127

 45-1 Ramsey Road, Shirley, NY 11967, USA