

## Recombinant Human ARTS-1 protein, GST-tagged

Cat. No. ARTS-1-873H Lot. No. (See product label)

### SPECIFICATION

<b>Product Overview</b>	Human ARTS-1 partial ORF ( AAH30775, 832 a.a. - 941 a.a.) recombinant protein with GST-tag at N-terminal.
<b>Species</b>	Human
<b>Source</b>	Wheat Germ
<b>ProteinLength</b>	832-941 a.a.
<b>Description</b>	The protein encoded by this gene is an aminopeptidase involved in trimming HLA class I-binding precursors so that they can be presented on MHC class I molecules. The encoded protein acts as a monomer or as a heterodimer with ERAP2. This protein may also be involved in blood pressure regulation by inactivation of angiotensin II. Three transcript variants encoding two different isoforms have been found for this gene.[provided by RefSeq, Oct 2010]
<b>Molecular Mass</b>	37.73 kDa
<b>AA Sequence</b>	FPQILTLIGRNPVGYPLAWQFLRKNWNKLVQKFELGSSSIAHMVMGTTNQFSTRTRL EEVKGFFSSLKENGSQLRCVQQTIIETIEENIGWMDKNFDKIRVWLQSEKLERM
<b>Applications</b>	Enzyme-linked Immunoabsorbent Assay; Western Blot (Recombinant protein); Antibody Production; Protein Array
<b>Notes</b>	Best use within three months from the date of receipt of this protein.

 Tel: 1-631-559-9269 1-516-512-3133

 Email: [info@creative-biomart.com](mailto:info@creative-biomart.com)  Fax: 1-631-938-8127

 45-1 Ramsey Road, Shirley, NY 11967, USA

**Storage** Store at -80 centigrade. Aliquot to avoid repeated freezing and thawing.

**Storage Buffer** 50 mM Tris-HCl, 10 mM reduced Glutathione, pH=8.0 in the elution buffer.

## GENE INFORMATION

**Gene Name** ERAP1 endoplasmic reticulum aminopeptidase 1 [ Homo sapiens ]

**Official Symbol** ERAP1

**Synonyms**

ERAP1; endoplasmic reticulum aminopeptidase 1; A LAP; adipocyte derived leucine aminopeptidase; aminopeptidase regulator of TNFR1 shedding; ARTS 1; ERAAP1; KIAA0525; PILS AP; puromycin insensitive leucyl specific aminopeptidase; aminopeptidase PILS; adipocyte-derived leucine aminopeptidase; puromycin-insensitive leucyl-specific aminopeptidase; endoplasmic reticulum aminopeptidase associated with antigen processing; type 1 tumor necrosis factor receptor shedding aminopeptidase regulator; ALAP; A-LAP; ARTS1; ERAAP; APPILS; ARTS-1; PILSAP; PILS-AP;

**Gene ID** 51752

**mRNA Refseq** NM\_001040458

**Protein Refseq** NP\_001035548

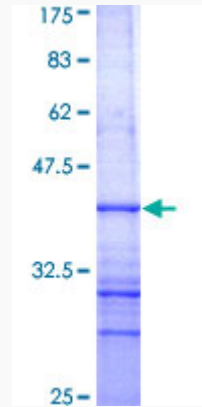
**MIM** 606832

**UniProt ID** Q9NZ08

 Tel: 1-631-559-9269 1-516-512-3133

 Email: [info@creative-biomart.com](mailto:info@creative-biomart.com)  Fax: 1-631-938-8127

 45-1 Ramsey Road, Shirley, NY 11967, USA



12.5% SDS-PAGE Stained with Coomassie Blue.

Tel: 1-631-559-9269 1-516-512-3133

Email: [info@creative-biomart.com](mailto:info@creative-biomart.com) Fax: 1-631-938-8127

45-1 Ramsey Road, Shirley, NY 11967, USA