

Recombinant Human ARX Protein, Myc/DDK-tagged, C13 and N15-labeled

Cat. No. ARX-4868H **Lot. No.** (See product label)

SPECIFICATION

Product Overview	ARX MS Standard C13 and N15-labeled recombinant protein (NP_620689) with a C-terminal MYC/DDK tag, was expressed in HEK293 cells.
Species	Human
Source	HEK293
Description	This gene is a homeobox-containing gene expressed during development. The expressed protein contains two conserved domains, a C-peptide (or aristaless domain) and the prd-like class homeobox domain. It is a member of the group-II aristaless-related protein family whose members are expressed primarily in the central and/or peripheral nervous system. This gene is thought to be involved in CNS development. Expansion of a polyalanine tract and other mutations in this gene cause X-linked cognitive disability and epilepsy.
Molecular Mass	58 kDa
AA Sequence	MSNQYQEEGCSERPECKSKSPTLLSSYCIDSILGRRSPCKMRLLGAAQSLPAPLTSR ADPEKAVQGSPKSSSAPFEAELHLPKLRRLYGPGGGRLLQGAAAAAAAAAAAAAAAA AATATAGPRGEAPPPPTARPGERPDGAGAAAAAAAAAAAAAWDTLKISQAPQVSI SRSKSYRENGAPFVPPPPALDELGGPGGVTHPEERLGVAGGPGSAPAAGGGTGTE DDEELLEDEEDEDEEEELLEDEEELLEDDARALLKEPRRCPVAAATGAVAAAAAAA VATEGGELSPKEELLHPEDAEGKDGEDSVCLSGSDSEEGLLKRKQRRYRTTFTS

 Tel: 1-631-559-9269 1-516-512-3133

 Email: info@creative-biomart.com  Fax: 1-631-938-8127

 45-1 Ramsey Road, Shirley, NY 11967, USA

YQLEELERAFQKTHYPDVFTREELAMRLDLTEARVQVWFQNRRAKWRKREKAGAQ
 THPPGLPFPGLSATHPLSPYLDASFPFPHHPALDSAWTAAAAAFAFSLPPPPG
 SASLPPSGAPLGLSTFLGAAVFRHPAFISPAFGRLFSTMAPLTSASTAAALLRQPTPA
 VEGAVASGALADPATAAADRRASSIAALRLKAKEHAAQLTQLNILPGTSTGKEVCTR
 TRPLEQKLISEEDLAANDILDYKDDDDKV

Purity > 80% as determined by SDS-PAGE and Coomassie blue staining

Stability Stable for 3 months from receipt of products under proper storage and handling conditions.

Storage Store at -80 centigrade. Avoid repeated freeze-thaw cycles.

Concentration 50 µg/mL as determined by BCA

Storage Buffer 100 mM glycine, 25 mM Tris-HCl, pH 7.3.

GENE INFORMATION

Gene Name [ARX aristaless related homeobox \[Homo sapiens \(human\) \]](#)

Official Symbol [ARX](#)

Synonyms

ARX; aristaless related homeobox; mental retardation, X linked 29, mental retardation, X linked 32, mental retardation, X linked 33, mental retardation, X linked 36, mental retardation, X linked 38, mental retardation, X linked 43, mental retardation, X linked 54, mental retardation, X linked 76, mental retardation, X linked 87, MRX29, MRX32, MRX33, MRX36, MRX38, MRX43, MRX54, MRX76, MRX87, MRXS1, PRTS; homeobox protein ARX; cancer/testis antigen 121; CT121; EIEE1; ISSX; aristaless-related homeobox, X-linked; PRTS; MRX29; MRX32; MRX33; MRX36; MRX38; MRX43; MRX54; MRX76; MRX87; MRXS1;

 Tel: 1-631-559-9269 1-516-512-3133

 Email: info@creative-biomart.com  Fax: 1-631-938-8127

 45-1 Ramsey Road, Shirley, NY 11967, USA

Gene ID 170302

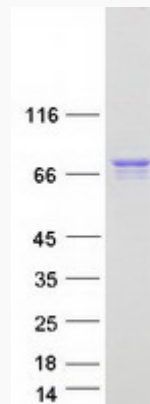
mRNA Refseq NM_139058

Protein Refseq NP_620689

MIM 300382

UniProt ID Q96QS3

SDS-PAGE



Tel: 1-631-559-9269 1-516-512-3133

Email: info@creative-biomart.com Fax: 1-631-938-8127

45-1 Ramsey Road, Shirley, NY 11967, USA