

Recombinant Human ARX protein, GST-tagged

Cat. No. ARX-876H **Lot. No.** (See product label)

SPECIFICATION

Product Overview	Human ARX partial ORF (NP_620689, 159 a.a. - 264 a.a.) recombinant protein with GST-tag at N-terminal.
Species	Human
Source	Wheat Germ
Description	This gene is a homeobox-containing gene expressed during development. The expressed protein contains two conserved domains, a C-peptide (or aristaless domain) and the prd-like class homeobox domain. It is a member of the group-II aristaless-related protein family whose members are expressed primarily in the central and/or peripheral nervous system. This gene is thought to be involved in CNS development. Expansion of a polyalanine tract and other mutations in this gene cause X-linked mental retardation and epilepsy. [provided by RefSeq, Jul 2016]
Molecular Mass	37.29 kDa
AA Sequence	LKISQAPQVSISRSKSYRENGAPFVPPPPALDELGGPGGVTHPEERLGVAGGPGSA PAAGGGTGTEDDEEELLEDEEDEDDEEELLEDDARALLKEPR
Applications	Enzyme-linked Immunoabsorbent Assay; Western Blot (Recombinant protein); Antibody Production; Protein Array
Notes	Best use within three months from the date of receipt of this protein.

 Tel: 1-631-559-9269 1-516-512-3133

 Email: info@creative-biomart.com  Fax: 1-631-938-8127

 45-1 Ramsey Road, Shirley, NY 11967, USA

Storage Store at -80 centigrade. Aliquot to avoid repeated freezing and thawing.

Storage Buffer 50 mM Tris-HCl, 10 mM reduced Glutathione, pH=8.0 in the elution buffer.

GENE INFORMATION

Gene Name [ARX aristaless related homeobox \[Homo sapiens \]](#)

Official Symbol [ARX](#)

Synonyms

ARX; aristaless related homeobox; mental retardation, X linked 29 , mental retardation, X linked 32 , mental retardation, X linked 33 , mental retardation, X linked 36 , mental retardation, X linked 38 , mental retardation, X linked 43 , mental retardation, X linked 54 , mental retardation, X linked 76 , mental retardation, X linked 87 , MRX29, MRX32, MRX33, MRX36, MRX38, MRX43, MRX54, MRX76, MRX87, MRXS1, PRTS; homeobox protein ARX; cancer/testis antigen 121; CT121; EIEE1; ISSX; aristaless-related homeobox, X-linked; PRTS; MRX29; MRX32; MRX33; MRX36; MRX38; MRX43; MRX54; MRX76; MRX87; MRXS1;

Gene ID [170302](#)

mRNA Refseq [NM_139058](#)

Protein Refseq [NP_620689](#)

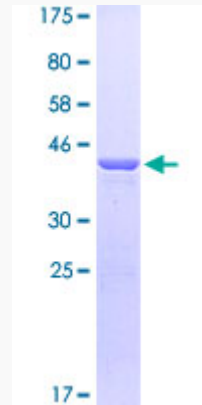
MIM [300382](#)

UniProt ID [Q96QS3](#)

 Tel: 1-631-559-9269 1-516-512-3133

 Email: info@creative-biomart.com  Fax: 1-631-938-8127

 45-1 Ramsey Road, Shirley, NY 11967, USA



12.5% SDS-PAGE Stained with Coomassie Blue

 Tel: 1-631-559-9269 1-516-512-3133

 Email: info@creative-biomart.com  Fax: 1-631-938-8127

 45-1 Ramsey Road, Shirley, NY 11967, USA