

Recombinant Human ASB1 protein, GST-tagged

Cat. No. ASB1-882H **Lot. No.** (See product label)

SPECIFICATION

Product Overview	Human ASB1 full-length ORF (AAH14528, 1 a.a. - 335 a.a.) recombinant protein with GST-tag at N-terminal.
Species	Human
Source	Wheat Germ
Description	The protein encoded by this gene contains an ankyrin repeat sequence and SOCS box domain. The SOCS box serves to couple suppressor of cytokine signalling (SOCS) proteins and their binding partners with the elongin B and C complex, targeting them for ubiquitination and degradation. [provided by RefSeq, Aug 2016]
Molecular Mass	62.59 kDa
AA Sequence	MAEGGSPDGRAGPGSAGRNLKEWLREQFCDHPLEHCEDTRLHDAAYVGDQLQTLR SLLQEESYRSRINEKSVWCCGWLPCTPLRIAATAGHGSCVDFLIRKGAEVDLVDVKG QTALYVAVVNGHLESTQILLEAGADPNRSRHRSTPVYHASRVGRADILKALIRYGA DVDVNHHLTPDVQPRFSRRLTSLVVCPLYISAAYHNLQCFRLLLLAGANPDFNCNGP VNTQGFYRGSFGVMDAVLRHGCEAAFVSLVVEFGANLNLVKWESLGPESRGRRK VDPEALQVFKEARSVPRTLCLCRVAVRRALGKHLHLIPSLPLPDIKKFLLHE
Applications	Enzyme-linked Immunoabsorbent Assay; Western Blot (Recombinant protein); Antibody Production; Protein Array
Notes	Best use within three months from the date of receipt of this protein.

 Tel: 1-631-559-9269 1-516-512-3133

 Email: info@creative-biomart.com  Fax: 1-631-938-8127

 45-1 Ramsey Road, Shirley, NY 11967, USA

Storage Store at -80 centigrade. Aliquot to avoid repeated freezing and thawing.

Storage Buffer 50 mM Tris-HCl, 10 mM reduced Glutathione, pH=8.0 in the elution buffer.

GENE INFORMATION

Gene Name *ASB1* ankyrin repeat and SOCS box containing 1 [Homo sapiens]

Official Symbol *ASB1*

Synonyms ASB-1

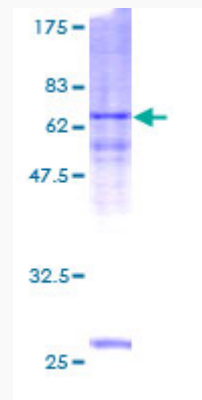
Gene ID 51665

mRNA Refseq NM_001040445.1

Protein Refseq NP_001035535.1

MIM 605758

UniProt ID Q9Y576



 Tel: 1-631-559-9269 1-516-512-3133

 Email: info@creative-biomart.com  Fax: 1-631-938-8127

 45-1 Ramsey Road, Shirley, NY 11967, USA



12.5% SDS-PAGE Stained with Coomassie Blue.

 Tel: 1-631-559-9269 1-516-512-3133

 Email: info@creative-biomart.com  Fax: 1-631-938-8127

 45-1 Ramsey Road, Shirley, NY 11967, USA