

## Recombinant Human ASB11 Protein, His-tagged

Cat. No. ASB11-01H Lot. No. (See product label)

### SPECIFICATION

<b>Product Overview</b>	Recombinant human ASB11 protein with His tag was expressed in E. coli.
<b>Species</b>	Human
<b>Source</b>	E.coli
<b>Description</b>	The protein encoded by this gene is a member of the ankyrin repeat and SOCS box-containing (ASB) family of proteins. They contain ankyrin repeat sequence and SOCS box domain. The SOCS box serves to couple suppressor of cytokine signalling (SOCS) proteins and their binding partners with the elongin B and C complex, possibly targeting them for degradation. Alternatively spliced transcript variants encoding different isoforms have been found for this gene.
<b>Molecular Mass</b>	31.88 kDa
<b>AA Sequence</b>	MNHKVHHHHHHMGNRKEAARIAEEIYGGISDCWADRSPLEHAAAQGRLLALKTLIA QGVNVLVTINRVSSLHEACLGGHVACAKALLENGAHVNGVTVHGATPLFNACCSG SAACVNVLLFEGAKAQLEVHLASPIHEAVKRGHRECMEILLANNVNIDHEVPQLGTPL YVACTYQRVDCVKLLELGASVDHGQWLDTPLHAAARQSNVEVIHLLTDYGANLKR RNAQGKSALDLAAPKSSVEQALLLREGPPALSQCRLCVRKCLGRACHQAIHKLHLP EPLERFLLYQ
<b>Purity</b>	>85% by SDS-PAGE
<b>Storage</b>	Store it under sterile conditions at -20 to -80 centigrade. It is recommended that the

 Tel: 1-631-559-9269 1-516-512-3133

 Email: [info@creative-biomart.com](mailto:info@creative-biomart.com)  Fax: 1-631-938-8127

 45-1 Ramsey Road, Shirley, NY 11967, USA

protein be aliquoted for optimal storage. Avoid repeated freeze-thaw cycles.

**Concentration** 0.4 mg/mL

**Storage Buffer** PBS, pH 7.4

## GENE INFORMATION

**Gene Name** [ASB11 ankyrin repeat and SOCS box containing 11 \[ Homo sapiens \(human\) \]](#)

**Official Symbol** [ASB11](#)

**Synonyms** ASB11; ankyrin repeat and SOCS box containing 11; ankyrin repeat and SOCS box protein 11; DKFZp779E2460; ASB-11; ankyrin repeat domain-containing SOCS box protein ASB11; MGC119168; MGC119169

**Gene ID** [140456](#)

**mRNA Refseq** [NM\\_001012428](#)

**Protein Refseq** [NP\\_001012428](#)

**MIM** [300626](#)

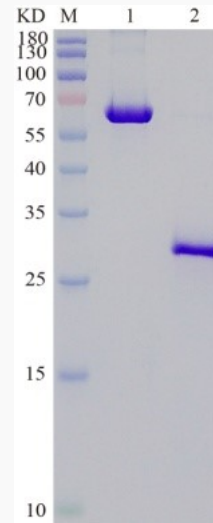
**UniProt ID** [Q8WXH4](#)

 Tel: 1-631-559-9269 1-516-512-3133

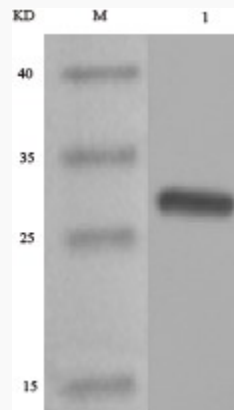
 Email: [info@creative-biomart.com](mailto:info@creative-biomart.com)  Fax: 1-631-938-8127

 45-1 Ramsey Road, Shirley, NY 11967, USA

**SDS-PAGE**



**WB**



 Tel: 1-631-559-9269 1-516-512-3133

 Email: [info@creative-biomart.com](mailto:info@creative-biomart.com)  Fax: 1-631-938-8127

 45-1 Ramsey Road, Shirley, NY 11967, USA