

Recombinant Human ASB8 protein, GST-tagged

Cat. No. ASB8-897H **Lot. No.** (See product label)

SPECIFICATION

Product Overview	Human ASB8 full-length ORF (NP_077000.1, 1 a.a. - 288 a.a.) recombinant protein with GST-tag at N-terminal.
Species	Human
Source	Wheat Germ
Description	ASB8 (Ankyrin Repeat And SOCS Box Containing 8) is a Protein Coding gene. Among its related pathways are Immune System and Class I MHC mediated antigen processing and presentation. An important paralog of this gene is PSMD10.
Molecular Mass	58 kDa
AA Sequence	MSSSMWYIMQSIQSKYSLSERLIRTIAAIRSFPHDNVEDLIRGGADVNCTHGTKPLH CACMVSDADCVELLLEKGAEVNALDGYNRTALHYAAEKDEACVEVLLEYGANPNAL DGNRDTPLHWAAFKNNAECVRALLESGASVNALDYNNDTPLSWAAMKGNLESVSIL LDYGAEVRVINLIGQTPISRLVALLVRGLGTEKEDSCFELLHRAVGHFELRKNGTMPR EVARDPQLCEKLTVLCAPGTLKTLARYAVRRSLGLQYLPDAVKGLPLPASLKEYLLL LE
Applications	Enzyme-linked Immunoabsorbent Assay; Western Blot (Recombinant protein); Antibody Production; Protein Array
Notes	Best use within three months from the date of receipt of this protein.

 Tel: 1-631-559-9269 1-516-512-3133

 Email: info@creative-biomart.com  Fax: 1-631-938-8127

 45-1 Ramsey Road, Shirley, NY 11967, USA

Storage Store at -80 centigrade. Aliquot to avoid repeated freezing and thawing.

Storage Buffer 50 mM Tris-HCl, 10 mM reduced Glutathione, pH=8.0 in the elution buffer.

GENE INFORMATION

Gene Name [ASB8 ankyrin repeat and SOCS box containing 8 \[Homo sapiens \]](#)

Official Symbol [ASB8](#)

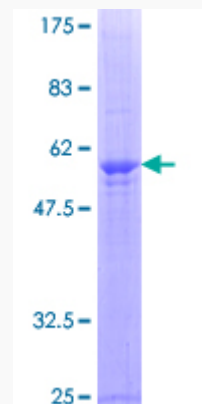
Synonyms ASB8; ankyrin repeat and SOCS box containing 8; ankyrin repeat and SOCS box protein 8; FLJ21255; MGC5540; ASB-8; ankyrin repeat and SOCS box-containing 8; PP14212;

Gene ID [140461](#)

mRNA Refseq [NM_024095](#)

Protein Refseq [NP_077000](#)

UniProt ID [Q9H765](#)



 Tel: 1-631-559-9269 1-516-512-3133

 Email: info@creative-biomart.com  Fax: 1-631-938-8127

 45-1 Ramsey Road, Shirley, NY 11967, USA



12.5% SDS-PAGE Stained with Coomassie Blue.

 Tel: 1-631-559-9269 1-516-512-3133

 Email: info@creative-biomart.com  Fax: 1-631-938-8127

 45-1 Ramsey Road, Shirley, NY 11967, USA