

## Recombinant Human ASCC1 protein, His-tagged

Cat. No. ASCC1-6872H Lot. No. (See product label)

### SPECIFICATION

<b>Product Overview</b>	Recombinant Human ASCC1 protein(Q8N9N2)(1-400aa), fused with C-terminal His tag, was expressed in E.coli.
<b>Species</b>	Human
<b>Source</b>	E.coli
<b>ProteinLength</b>	1-400a.a.
<b>Tag</b>	His
<b>Form</b>	If the delivery form is liquid, the default storage buffer is Tris/PBS-based buffer, 5%-50% glycerol. If the delivery form is lyophilized powder, the buffer before lyophilization is Tris/PBS-based buffer, 6% Trehalose, pH 8.0.
<b>Molecular Mass</b>	52.4 kDa
<b>Purity</b>	Greater than 90% as determined by SDS-PAGE.
<b>Storage</b>	Store at -20°C/-80°C upon receipt, aliquoting is necessary for mutiple use. Avoid repeated freeze-thaw cycles.
<b>Reconstitution</b>	We recommend that this vial be briefly centrifuged prior to opening to bring the contents to the bottom. Please reconstitute protein in deionized sterile water to a concentration of 0.1-1.0 mg/mL. We recommend to add 5-50% of glycerol (final

 Tel: 1-631-559-9269 1-516-512-3133

 Email: [info@creative-biomart.com](mailto:info@creative-biomart.com)  Fax: 1-631-938-8127

 45-1 Ramsey Road, Shirley, NY 11967, USA

concentration) and aliquot for long-term storage at -20°C/-80°C.

**AA Sequence**

```
MEVLRPQLIRIDGRNYRKNPVQEQTQHEEDEEDFYQGSMECADEPCDAYEVEQT
PQGFRSTLRAPSLLYNLIHLNTSND CGFQKITLDCQNIYTWKSRHIVGKRGDTRKKIE
METKTSISIPKPGQDGEIVITGQHRNGVISARTRIDVLLDTFRRKQPFTHFLAFFLNEV
EVQEGFLRFQEEVLAKCSMDHGVDSSIFQNPKKLHLTIGMLVLLSEEEIQQTCEMLQ
QCKEEFINDISGGKPLEVEMAGIEYMND DPGMVDVLYAKVHMKDGSNRLQELVDRV
LERFQASGLIVKEWNSVKLHATVMNTLFRKDPNAEGRYNLYTAEGKYIFKERESFDG
RNILKSFALLPRLEYNDAISAHCNLC LPGSSDSPASASQVAGITGVSDAYSQSLPGKS
```

## GENE INFORMATION

**Gene Name** [ASCC1 activating signal cointegrator 1 complex subunit 1 \[ Homo sapiens \]](#)

**Official Symbol** [ASCC1](#)

**Synonyms** ASCC1; activating signal cointegrator 1 complex subunit 1; ASC1p50; CGI 18; Em:AC022392.3; ASC-1 complex subunit P50; trip4 complex subunit p50; p50; CGI-18;

**Gene ID** [51008](#)

**mRNA Refseq** [NM\\_001198798](#)

**Protein Refseq** [NP\\_001185727](#)

**MIM** [614215](#)

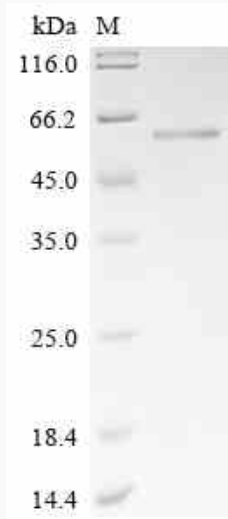
**UniProt ID** [Q8N9N2](#)

 Tel: 1-631-559-9269 1-516-512-3133

 Email: [info@creative-biomart.com](mailto:info@creative-biomart.com)  Fax: 1-631-938-8127

 45-1 Ramsey Road, Shirley, NY 11967, USA

**SDS-PAGE**



 Tel: 1-631-559-9269 1-516-512-3133

 Email: [info@creative-biomart.com](mailto:info@creative-biomart.com)  Fax: 1-631-938-8127

 45-1 Ramsey Road, Shirley, NY 11967, USA