

Recombinant Human ASCL1 Protein, Myc/DDK-tagged, C13 and N15-labeled

Cat. No. ASCL1-4032H **Lot. No.** (See product label)

SPECIFICATION

Product Overview	ASCL1 MS Standard C13 and N15-labeled recombinant protein (NP_004307) with a C-terminal MYC/DDK tag, was expressed in HEK293 cells.
Species	Human
Source	HEK293
Description	This gene encodes a member of the basic helix-loop-helix (BHLH) family of transcription factors. The protein activates transcription by binding to the E box (5'-CANNTG-3'). Dimerization with other BHLH proteins is required for efficient DNA binding. This protein plays a role in the neuronal commitment and differentiation and in the generation of olfactory and autonomic neurons. Mutations in this gene may contribute to the congenital central hypoventilation syndrome (CCHS) phenotype in rare cases.
Molecular Mass	25.5 kDa
AA Sequence	MESSAKMESGGAGQQPQPQPQPFLPPAACFFATAAAAAAAAAAAAAAQAQQQQQ QQQQQQQQAPQLRPAADGQPSGGGHKSAPKQVKRQRSSPELMRCKRRLNFSG FGYSLPQQQPAAVARRNERERNRVKLVNLGFATLREHVPNGAANKKMSKVETLRS AVEYIRALQQLLDEHDAVSAAFQAGVLSPTISPNYSNDLNSMAGSPVSSYSSDEGSY DPLSPEEQELLDFTNWFTTRTRPLEQKLISEEDLAANDILDYKDDDDKV
Purity	> 80% as determined by SDS-PAGE and Coomassie blue staining

 Tel: 1-631-559-9269 1-516-512-3133

 Email: info@creative-biomart.com  Fax: 1-631-938-8127

 45-1 Ramsey Road, Shirley, NY 11967, USA

Stability	Stable for 3 months from receipt of products under proper storage and handling conditions.
Storage	Store at -80 centigrade. Avoid repeated freeze-thaw cycles.
Concentration	50 µg/mL as determined by BCA
Storage Buffer	100 mM glycine, 25 mM Tris-HCl, pH 7.3.

GENE INFORMATION

Gene Name	ASCL1 achaete-scute family bHLH transcription factor 1 [Homo sapiens (human)]
Official Symbol	ASCL1
Synonyms	ASCL1; achaete-scute complex homolog 1 (Drosophila); achaete scute complex (Drosophila) homolog like 1, achaete scute complex like 1 (Drosophila); achaete-scute homolog 1; ASH1; bHLHa46; HASH1; ASH-1; achaete scute protein; achaete-scute complex-like 1; class A basic helix-loop-helix protein 46; MASH1;
Gene ID	429
mRNA Refseq	NM_004316
Protein Refseq	NP_004307
MIM	100790
UniProt ID	P50553

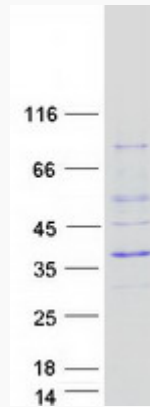
 Tel: 1-631-559-9269 1-516-512-3133

 Email: info@creative-biomart.com  Fax: 1-631-938-8127

 45-1 Ramsey Road, Shirley, NY 11967, USA



SDS-PAGE



Tel: 1-631-559-9269 1-516-512-3133

Email: info@creative-biomart.com Fax: 1-631-938-8127

45-1 Ramsey Road, Shirley, NY 11967, USA