

Recombinant Human ASCL1 protein, His-tagged

Cat. No. ASCL1-8541H Lot. No. (See product label)

SPECIFICATION

Product Overview	Recombinant Human ASCL1 protein(P50553)(251 aa), fused with N-terminal His tag, was expressed in E. coli.
Species	Human
Source	E.coli
Protein Length	251aa(including fusion tag)
Tag	N-His
Form	20mM Tris.Cl, 100mM NaCl, 50% Glycerol, pH8.0.
Molecular Mass	27.4kDa(including fusion tag)
Storage	Store at -80°C and avoid repeated freeze-thaw cycles.
Reconstitution	It is recommended that sterile water be added to the vial to prepare a stock solution of 0.2 ug/ul. Centrifuge the vial at 4°C before opening to recover the entire contents.

GENE INFORMATION

Gene Name	ASCL1 achaete-scute complex homolog 1 (Drosophila) [Homo sapiens]
Official Symbol	ASCL1

 Tel: 1-631-559-9269 1-516-512-3133

 Email: info@creative-biomart.com  Fax: 1-631-938-8127

 45-1 Ramsey Road, Shirley, NY 11967, USA

Synonyms ASCL1; achaete-scute complex homolog 1 (Drosophila); achaete scute complex (Drosophila) homolog like 1 , achaete scute complex like 1 (Drosophila); achaete-scute homolog 1; ASH1; bHLHa46; HASH1; ASH-1; achaete scute protein; achaete-scute complex-like 1; class A basic helix-loop-helix protein 46; MASH1;

Gene ID 429

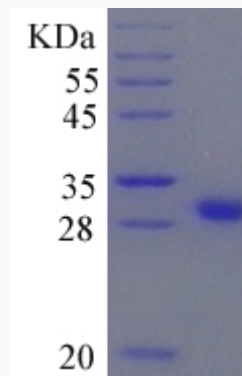
mRNA Refseq NM_004316

Protein Refseq NP_004307

MIM 100790

UniProt ID P50553

SDS-PAGE



 Tel: 1-631-559-9269 1-516-512-3133

 Email: info@creative-biomart.com  Fax: 1-631-938-8127

 45-1 Ramsey Road, Shirley, NY 11967, USA