

Recombinant Human ASCL1 protein, GST-tagged

Cat. No. ASCL1-901H **Lot. No.** (See product label)

SPECIFICATION

Product Overview	Human ASCL1 full-length ORF (NP_004307.2, 1 a.a. - 236 a.a.) recombinant protein with GST-tag at N-terminal.
Species	Human
Source	Wheat Germ
Description	This gene encodes a member of the basic helix-loop-helix (BHLH) family of transcription factors. The protein activates transcription by binding to the E box (5'-CANNTG-3'). Dimerization with other BHLH proteins is required for efficient DNA binding. This protein plays a role in the neuronal commitment and differentiation and in the generation of olfactory and autonomic neurons. Mutations in this gene may contribute to the congenital central hypoventilation syndrome (CCHS) phenotype in rare cases. [provided by RefSeq, Jul 2008]
Molecular Mass	51.9 kDa
AA Sequence	MESSAKMESGGAGQQPQPQPQPFLPPAACFFATAAAAAAAAAAAAAAQAQQQQQ QQQQQQQQAPQLRPAADGQPSGGGHKSAPKQVKRQRSSPELMRCKRRLNFSG FGYSLPQQQPAAVARRNERERNRVKLVNLGFATLREHVPNGAANKKMSKVETLRS AVEYIRALQQLLDEHDAVSAAFQAGVLSPTISPNYSNDLNSMAGSPVSSYSSDEGSY DPLSPEEQELLDFTNWF
Applications	Enzyme-linked Immunoabsorbent Assay; Western Blot (Recombinant protein); Antibody Production; Protein Array

 Tel: 1-631-559-9269 1-516-512-3133

 Email: info@creative-biomart.com  Fax: 1-631-938-8127

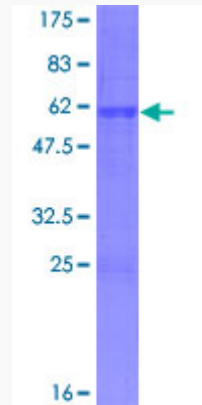
 45-1 Ramsey Road, Shirley, NY 11967, USA

Notes	Best use within three months from the date of receipt of this protein.
Storage	Store at -80 centigrade. Aliquot to avoid repeated freezing and thawing.
Storage Buffer	50 mM Tris-HCl, 10 mM reduced Glutathione, pH=8.0 in the elution buffer.
GENE INFORMATION	
Gene Name	ASCL1 achaete-scute complex homolog 1 (Drosophila) [Homo sapiens]
Official Symbol	ASCL1
Synonyms	ASCL1; achaete-scute complex homolog 1 (Drosophila); achaete scute complex (Drosophila) homolog like 1 , achaete scute complex like 1 (Drosophila); achaete-scute homolog 1; ASH1; bHLHa46; HASH1; ASH-1; achaete scute protein; achaete-scute complex-like 1; class A basic helix-loop-helix protein 46; MASH1;
Gene ID	429
mRNA Refseq	NM_004316
Protein Refseq	NP_004307
MIM	100790
UniProt ID	P50553

 Tel: 1-631-559-9269 1-516-512-3133

 Email: info@creative-biomart.com  Fax: 1-631-938-8127

 45-1 Ramsey Road, Shirley, NY 11967, USA



12.5% SDS-PAGE Stained with Coomassie Blue.

 Tel: 1-631-559-9269 1-516-512-3133

 Email: info@creative-biomart.com  Fax: 1-631-938-8127

 45-1 Ramsey Road, Shirley, NY 11967, USA