

Recombinant Human ASCL2 Protein, His tagged

Cat. No. ASCL2-001H **Lot. No.** (See product label)

SPECIFICATION

Product Overview	Recombinant Human ASCL2 Protein with His tag was expressed in Insect Cells
Species	Human
Source	Insect Cells
ProteinLength	1-193 aa
Description	This gene is a member of the basic helix-loop-helix (BHLH) family of transcription factors. It activates transcription by binding to the E box (5'-CANNTG-3'). Dimerization with other BHLH proteins is required for efficient DNA binding. Involved in the determination of the neuronal precursors in the peripheral nervous system and the central nervous system.
Form	Sterile PBS, pH7.4, 10% Glycerol
Molecular Mass	21 kDa
AASequence	MDGGTLPRSAPPAPPVPGCAARRRPASPELLRCSRRRRPATAETGGGAAAVARR NERERNRVKLVNLGFQALRQHVPHGGASKKLSKVETLRSAYEYIRALQRLLAEHDA VRNALAGGLRPQAVRPSAPRGPPTTPVAASPSRASSSPGRGGSSEPGSPRSAYS SDDSGCEGALSPAERELLDFFSSWLGGYHHHHHHHH
Endotoxin	< 1 EU/μg by LAL

 Tel: 1-631-559-9269 1-516-512-3133

 Email: info@creative-biomart.com  Fax: 1-631-938-8127

 45-1 Ramsey Road, Shirley, NY 11967, USA

Purity	>90% by SDS-PAGE
Storage	Store it under sterile conditions at -20 to -80 centigrade. It is recommended that the protein be aliquoted for optimal storage. Avoid repeated freeze-thaw cycles.
Concentration	1 mg/mL by Bradford

GENE INFORMATION

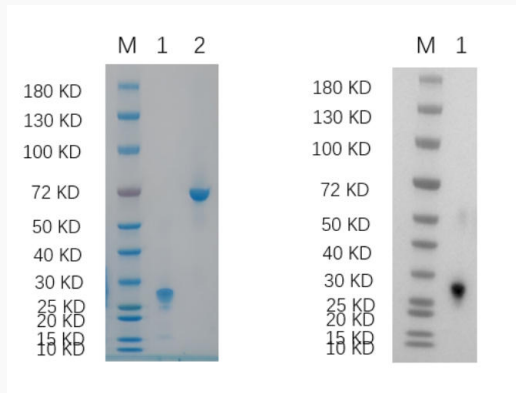
Gene Name	ASCL2 achaete-scute family bHLH transcription factor 2 [Homo sapiens (human)]
Official Symbol	ASCL2
Synonyms	ASCL2; achaete-scute complex homolog 2 (Drosophila); achaete scute complex (Drosophila) homolog like 2, achaete scute complex like 2 (Drosophila); achaete-scute homolog 2; ASH2; bHLHa45; HASH2; ASH-2; achaete-scute complex-like 2; mammalian achaete/scute homologue 2; class A basic helix-loop-helix protein 45; MASH2;
Gene ID	430
mRNA Refseq	NM_005170
Protein Refseq	NP_005161
MIM	601886
UniProt ID	Q99929

 Tel: 1-631-559-9269 1-516-512-3133

 Email: info@creative-biomart.com  Fax: 1-631-938-8127

 45-1 Ramsey Road, Shirley, NY 11967, USA

SDS-PAGE and WB



Reducing 4%-20% SDS-PAGE (CBB stained) and WB (Anti-His Mouse Monoclonal Antibody) analysis profiles of purified ASCL2. 1. ASCL2: 1 μ g 2. BSA: 1 μ g

 Tel: 1-631-559-9269 1-516-512-3133

 Email: info@creative-biomart.com  Fax: 1-631-938-8127

 45-1 Ramsey Road, Shirley, NY 11967, USA